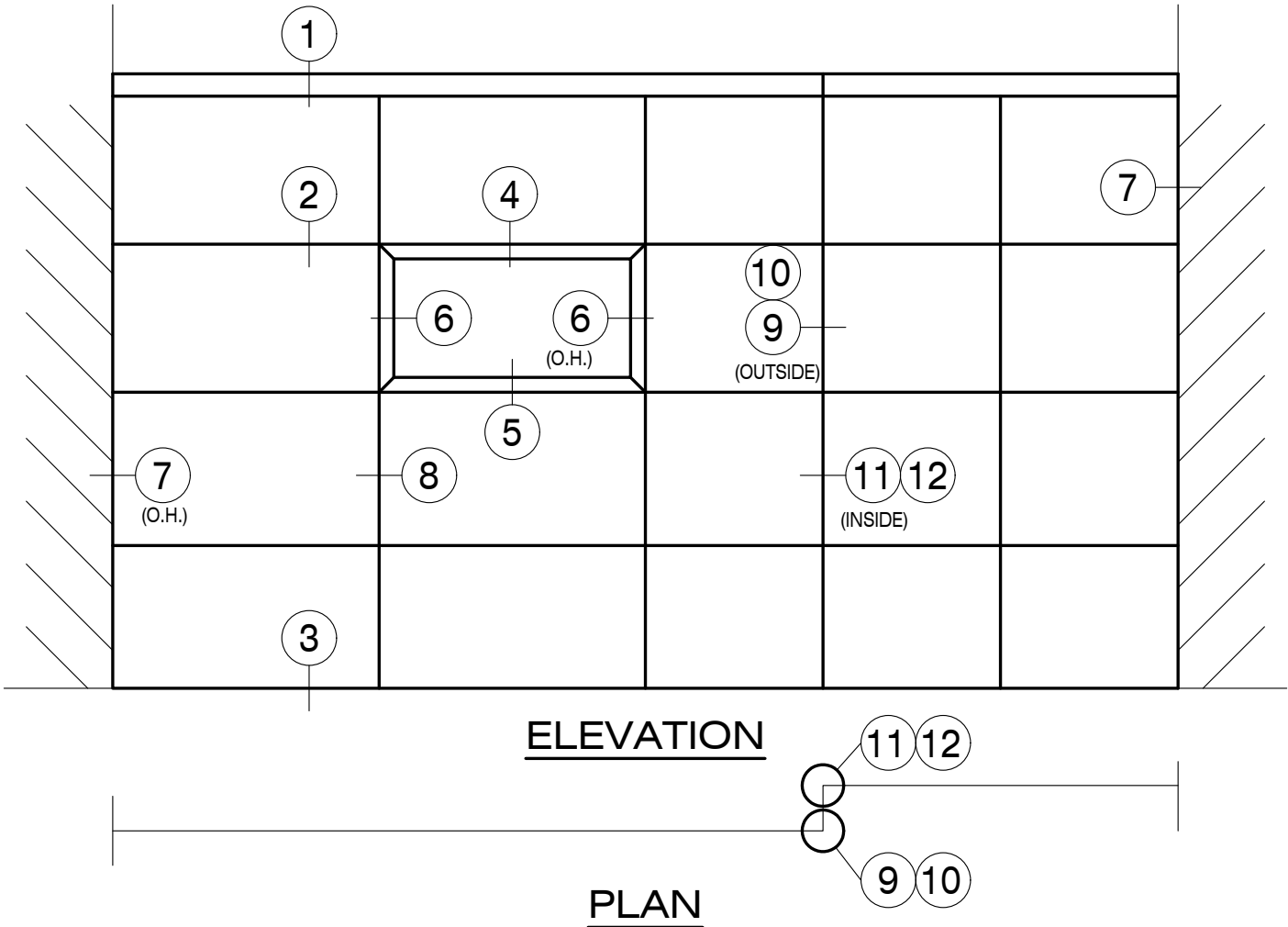
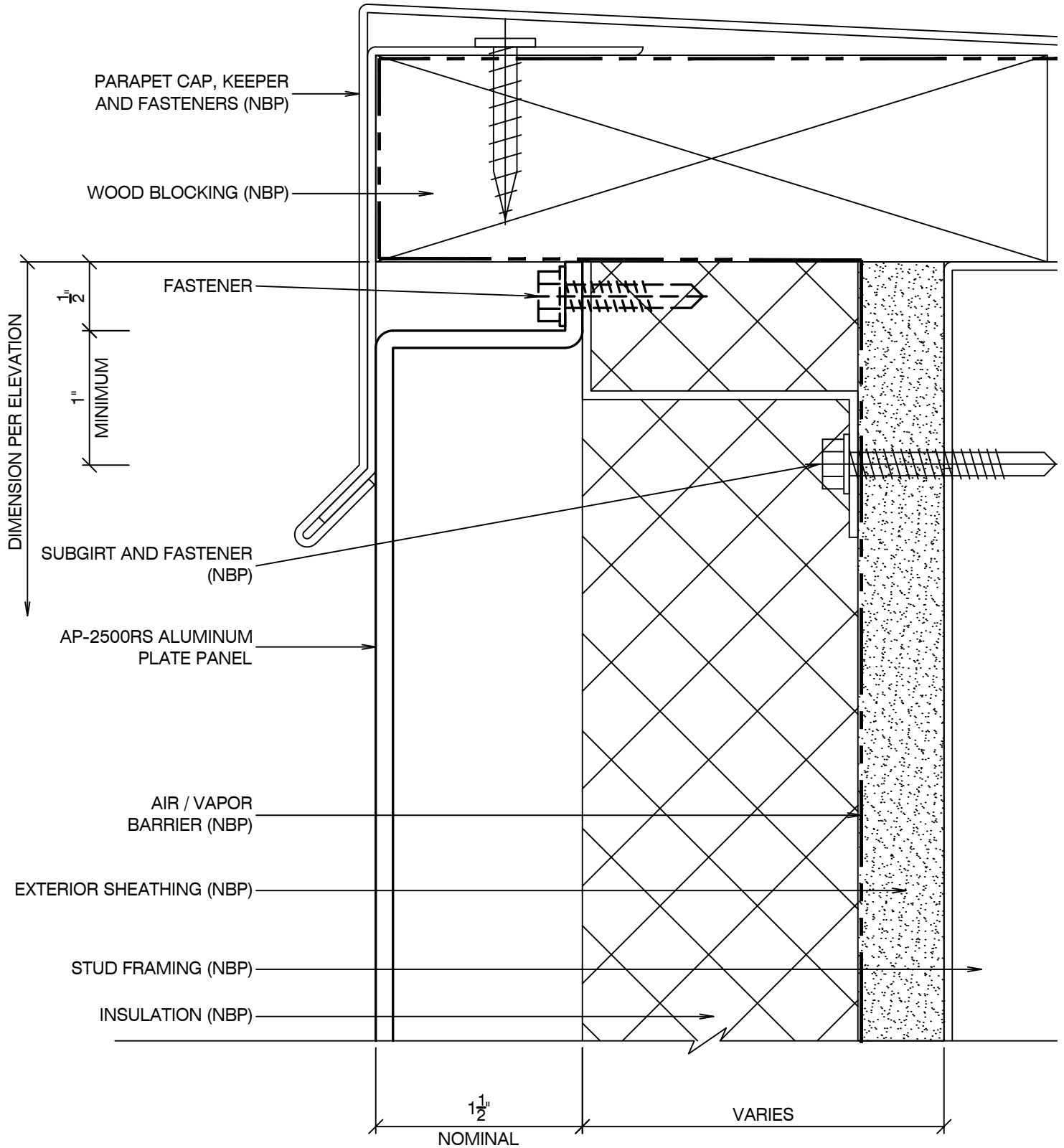


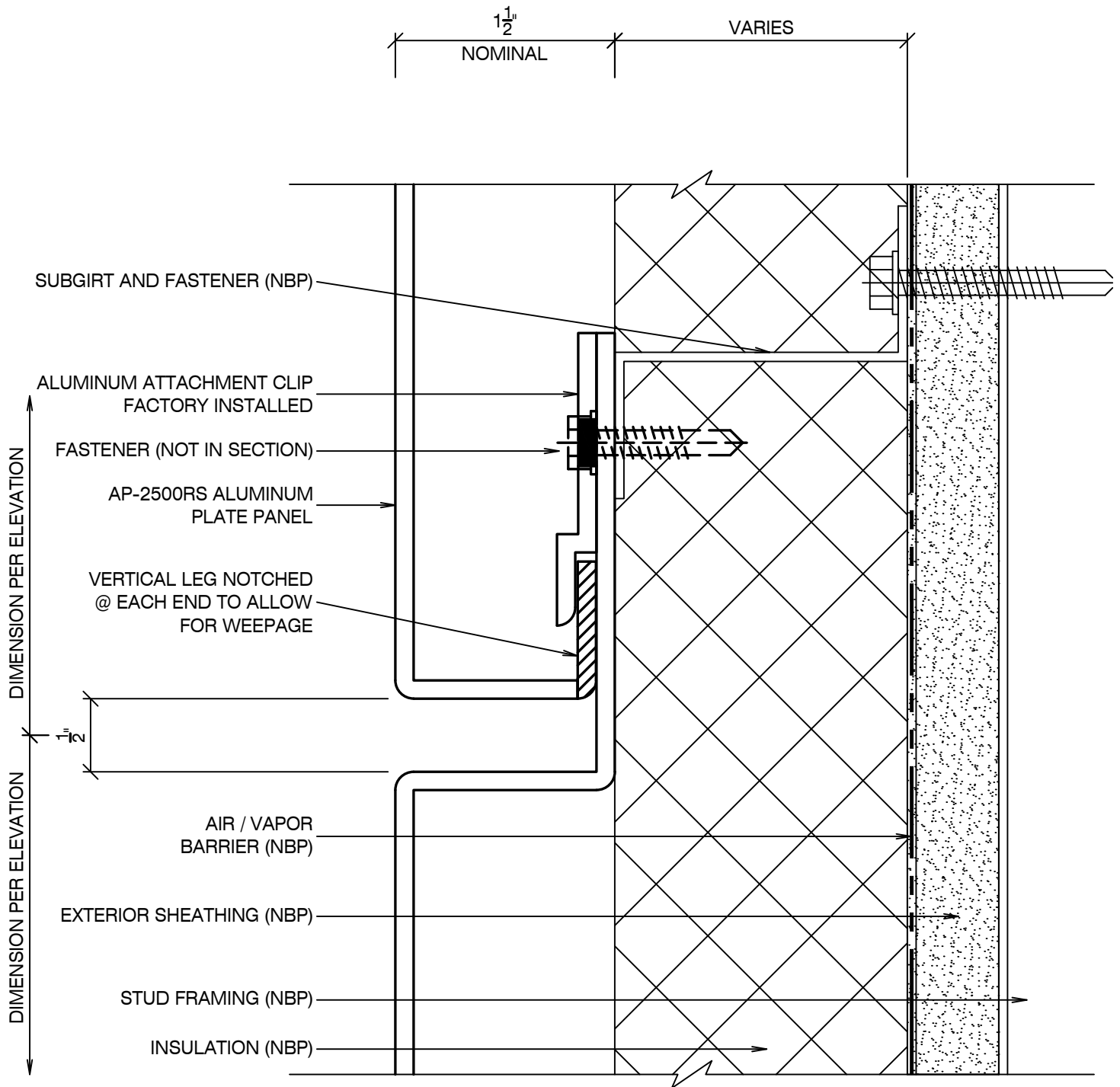
1. **Most details included herein are drawn to full scale.**
2. **Details shown herein, illustrate 1-1/2" deep system of 1/8" aluminum plate panels. Other system depths and plate thickness are available. Refer to other sections of this literature for additional options or consult Protean for any special requirements.**
3. **In general, panel attachment should be made along the long edge of the panels.**
4. **Details as shown herein illustrate a horizontal installation with subgirts and panel attachment located at the horizontal joints. For a vertical panel installation, modify details to install panels vertically.**
5. **Alternate subgirt layouts are available where subgirts can be oriented in the opposite direction of the long edge of the panels. Contact Protean for further information on these types of installations.**
6. **The enclosed details represent typical standard details for the AP-2500RS system. In so much as the AP-2500RS is a custom designed system, this is only the beginning of the possibilities. Consult Protean for assistance in developing custom details for your application.**

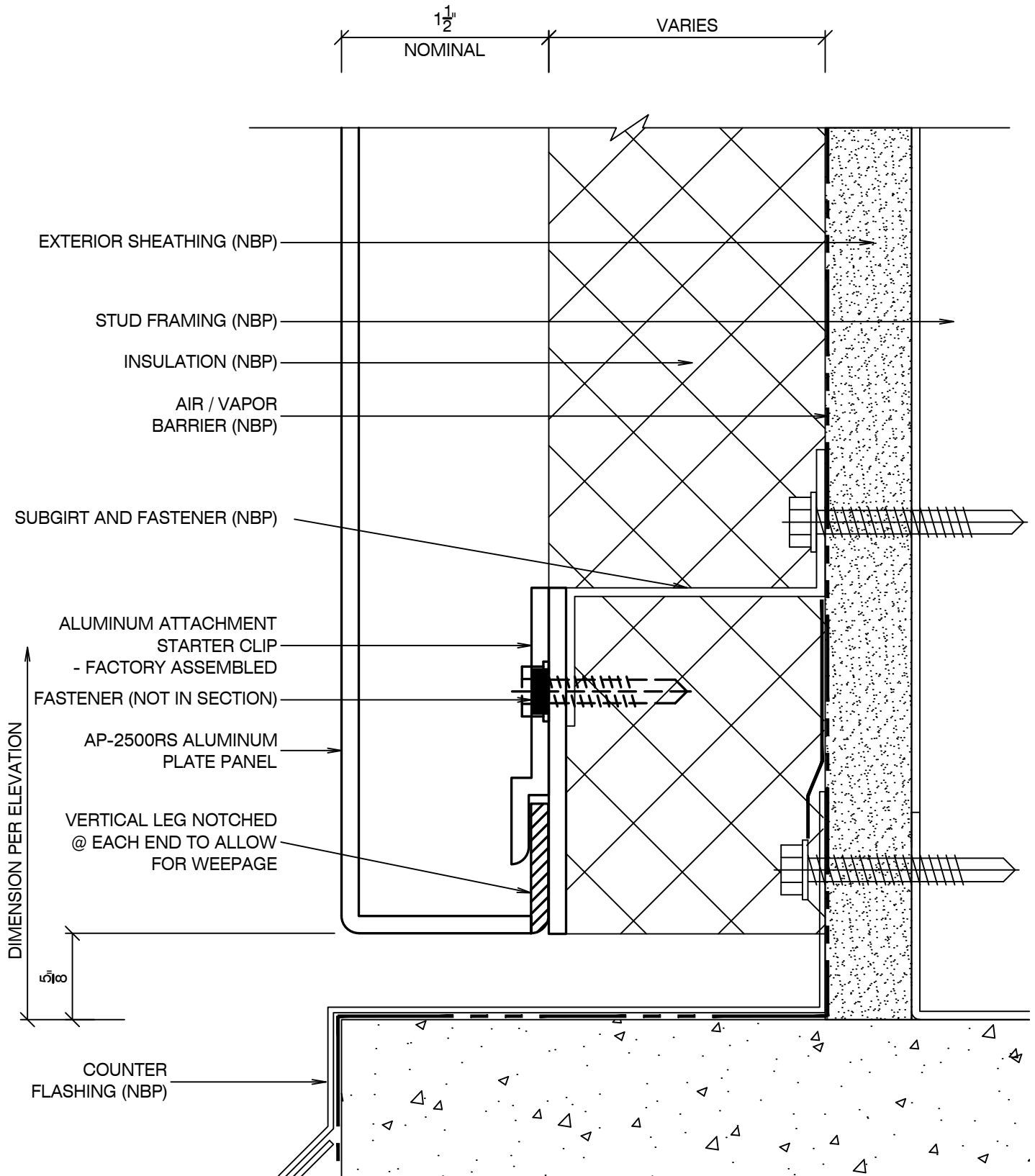


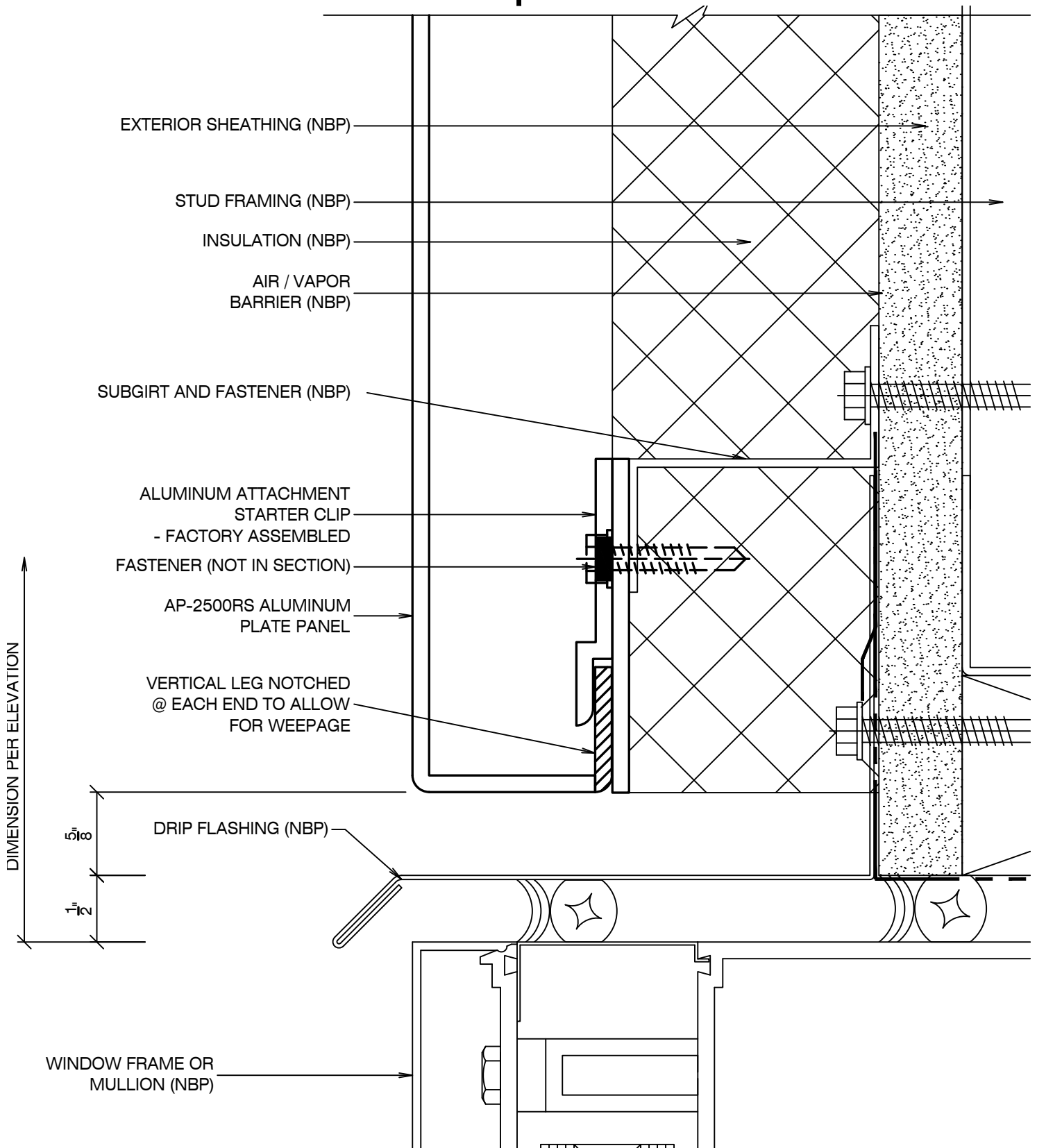
### INDEX

<u>SHEET #</u>	<u>DESCRIPTION</u>	<u>SHEET #</u>	<u>DESCRIPTION</u>
AP-2500RS / 1	PARAPET CAP	AP-2500RS / 8	VERTICAL JOINT
AP-2500RS / 2	HORIZONTAL JOINT	AP-2500RS / 9	OUTSIDE CORNER (BENT)
AP-2500RS / 3	BASE DETAIL	AP-2500RS / 10	NOT USED
AP-2500RS / 4	WINDOW HEAD	AP-2500RS / 11	INSIDE CORNER (BENT)
AP-2500RS / 5	WINDOW SILL	AP-2500RS / 12	NOT USED
AP-2500RS / 6	WINDOW JAMB		
AP-2500RS / 7	JAMB DETAIL		

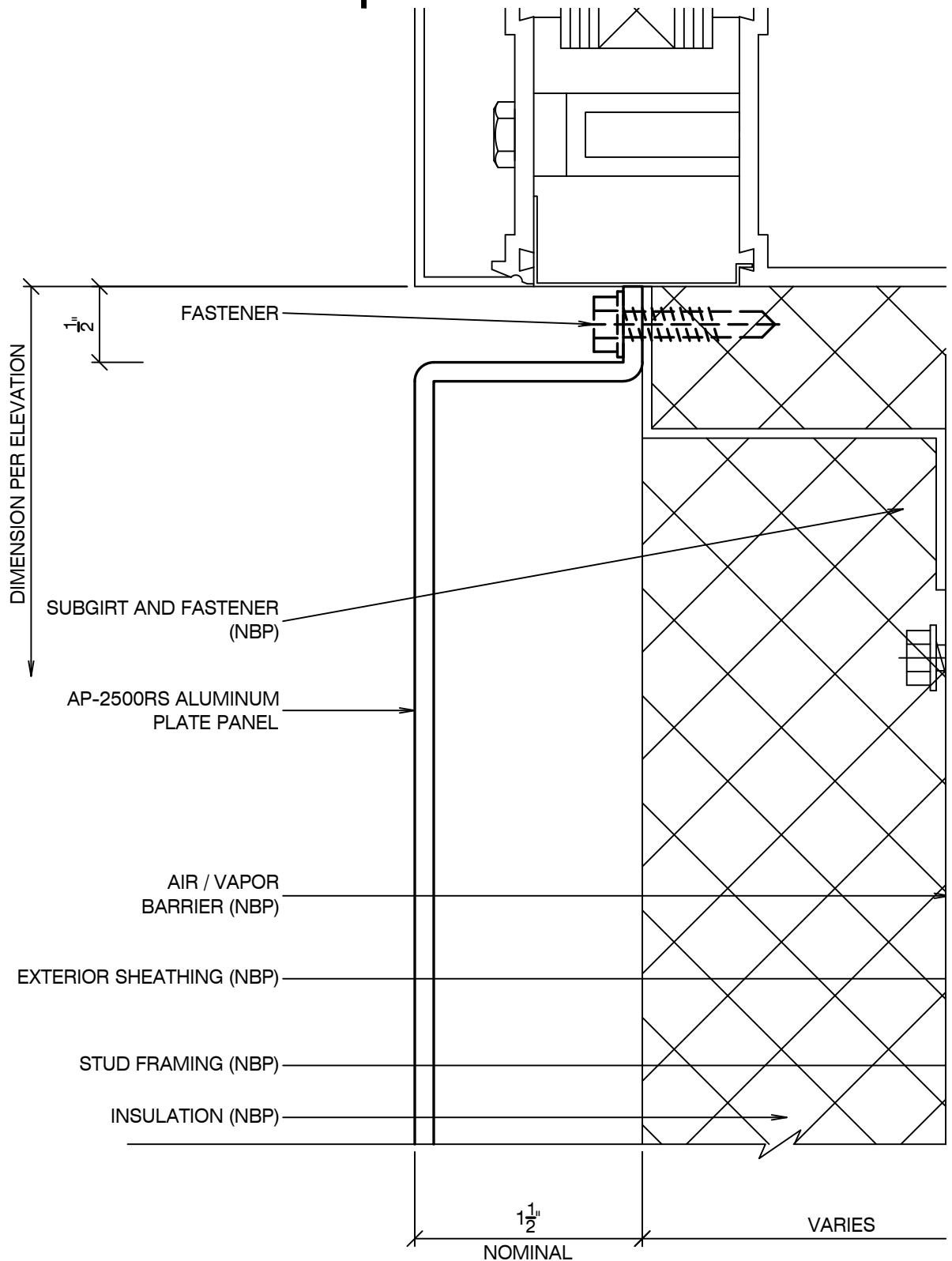






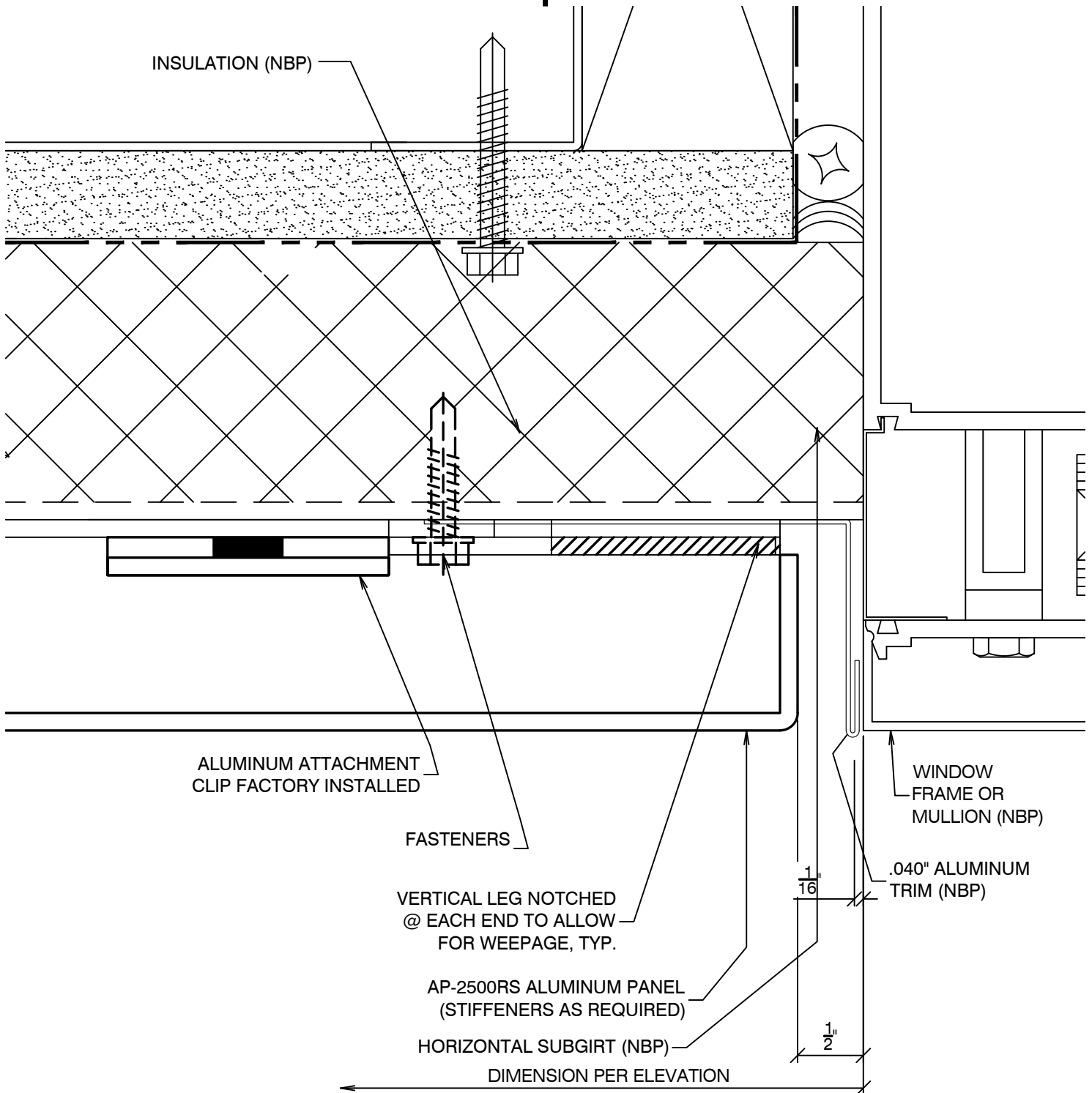


### Typical Window Sill Detail



Construction Products, Inc.

### Typical Window Jamb Detail





Construction Products, Inc.

### Typical Jamb Detail

