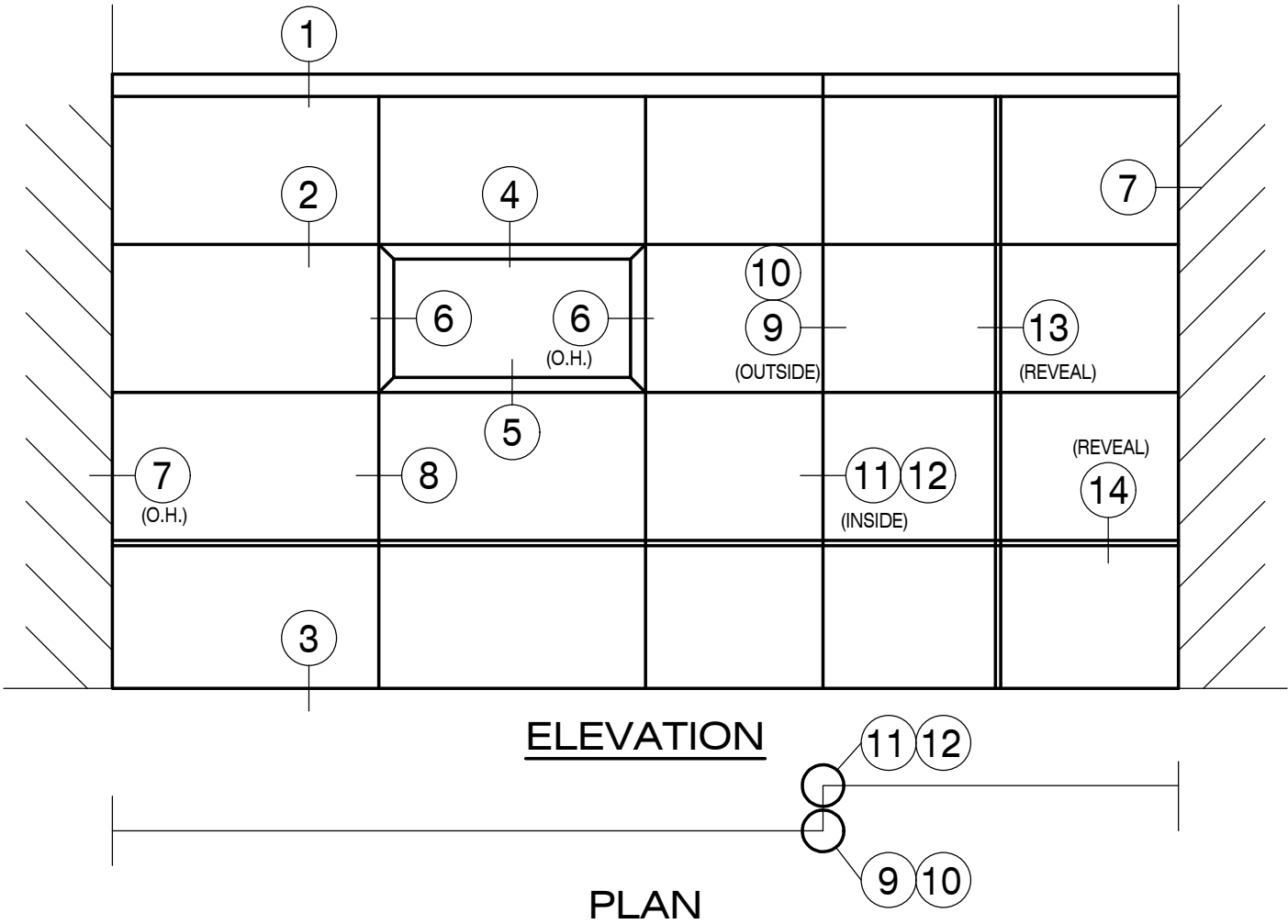
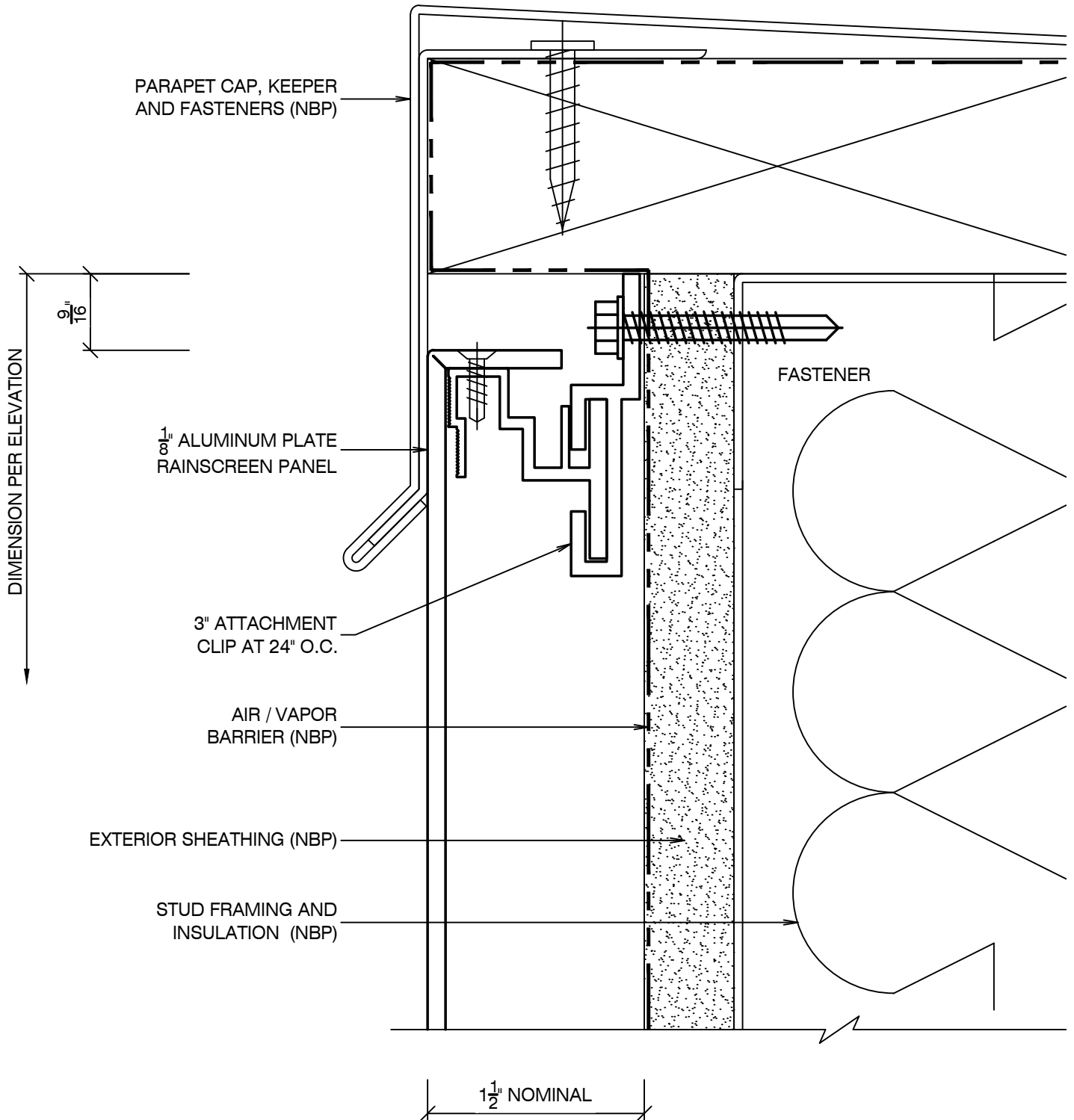


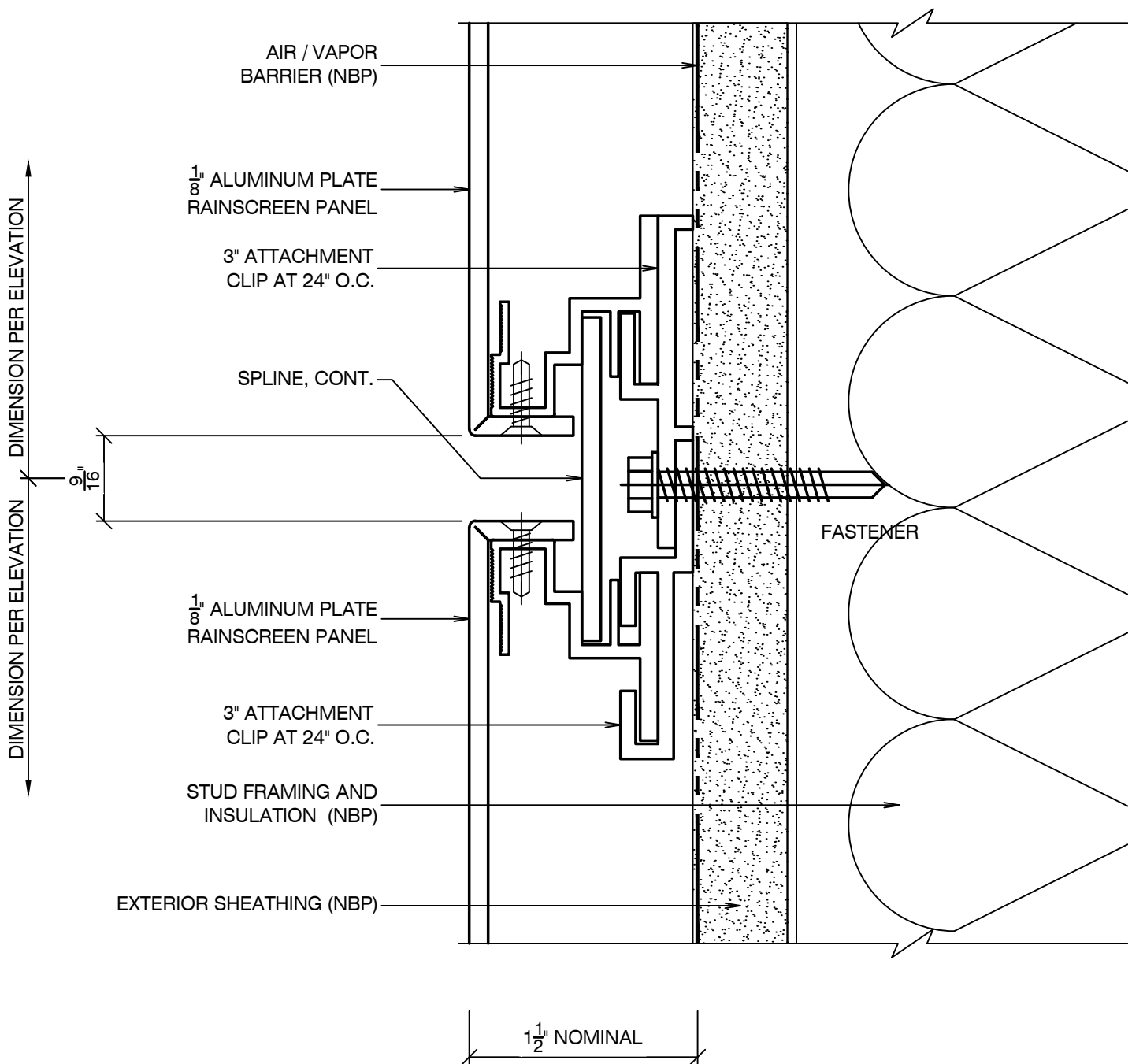
1. Most details included herein are drawn to full scale.
2. Details shown herein illustrate a  $1\frac{1}{2}$ " aluminum rainscreen panel.  
The overall system depth can be increased with shims or subgirts. Refer to other sections of this literature for additional options or consult Protean for any special requirements.
3. In general, panel attachment should be made along all edges of the panels.
4. Details as shown herein, illustrate installation without subgirts and panel attachment located in all joints.
5. Alternate subgirt layouts are available where subgirts can be oriented horizontally or vertically opposite the direction of the long side of the panel. Contact Protean for further information on these types of installations.
6. The enclosed details represent typical standard details for the AP-3000RS system. In so much as the AP-3000RS is a custom designed system, this is only the beginning of the possibilities. Consult Protean for assistance in developing custom details for your application.

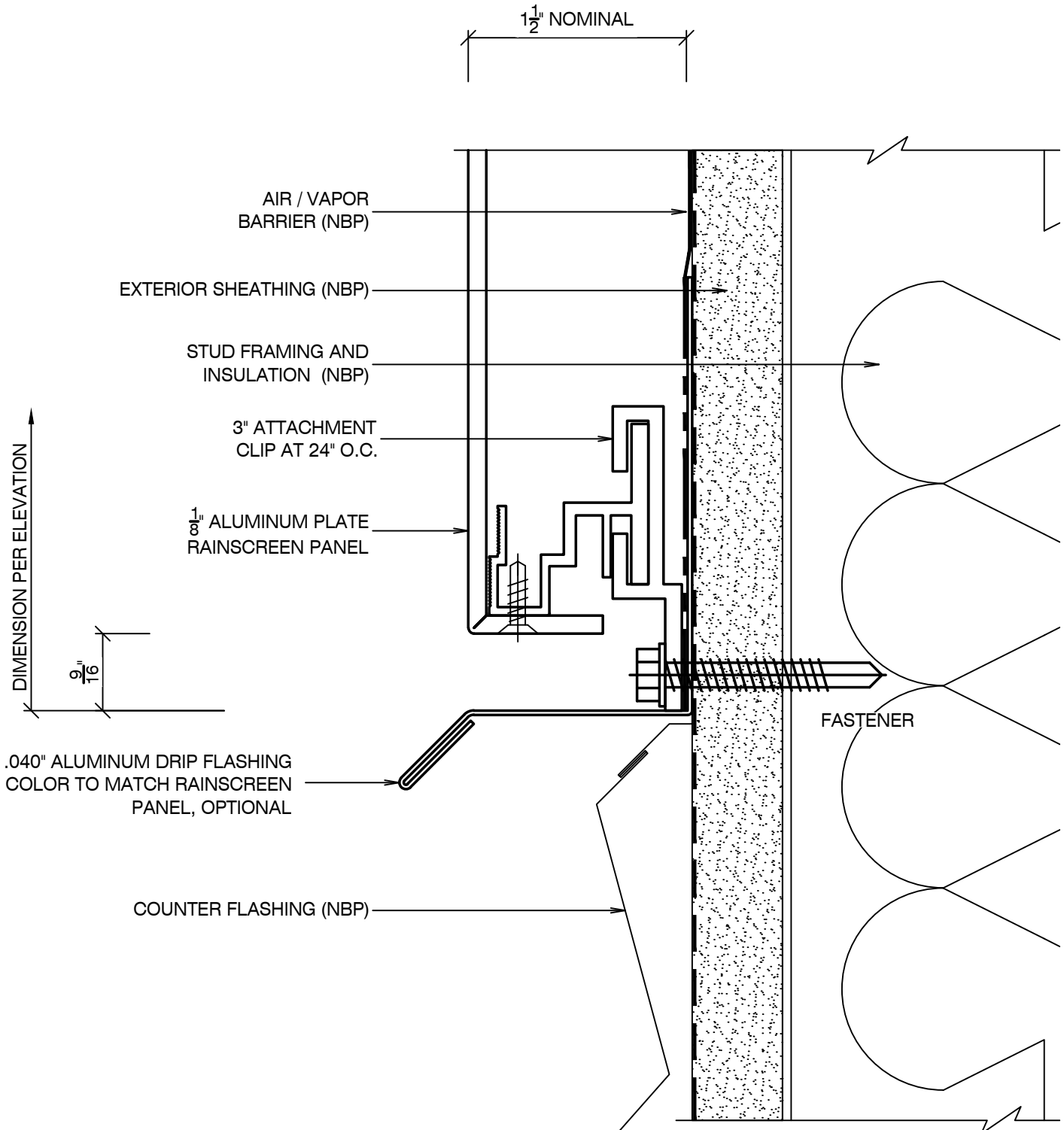


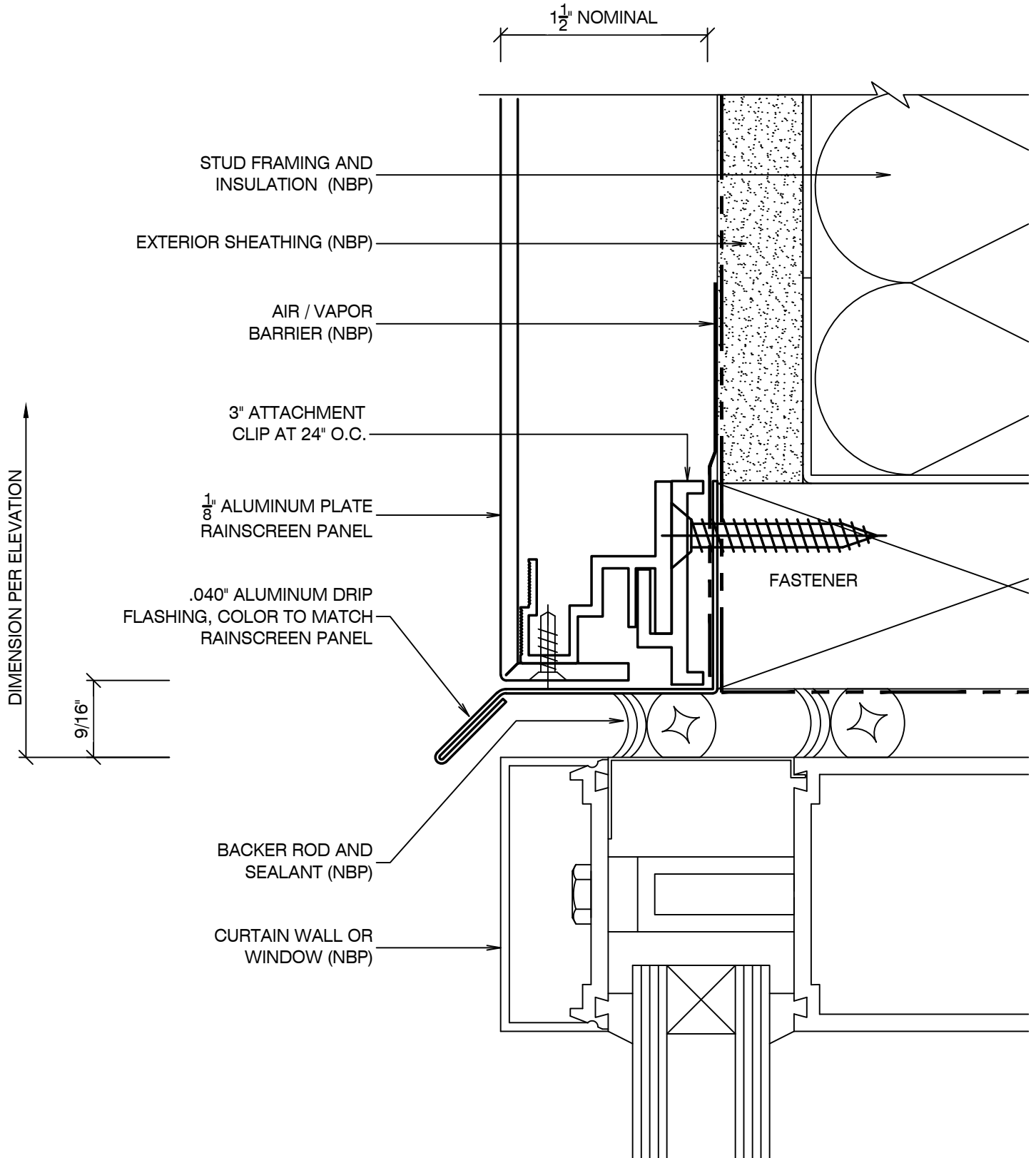
### INDEX

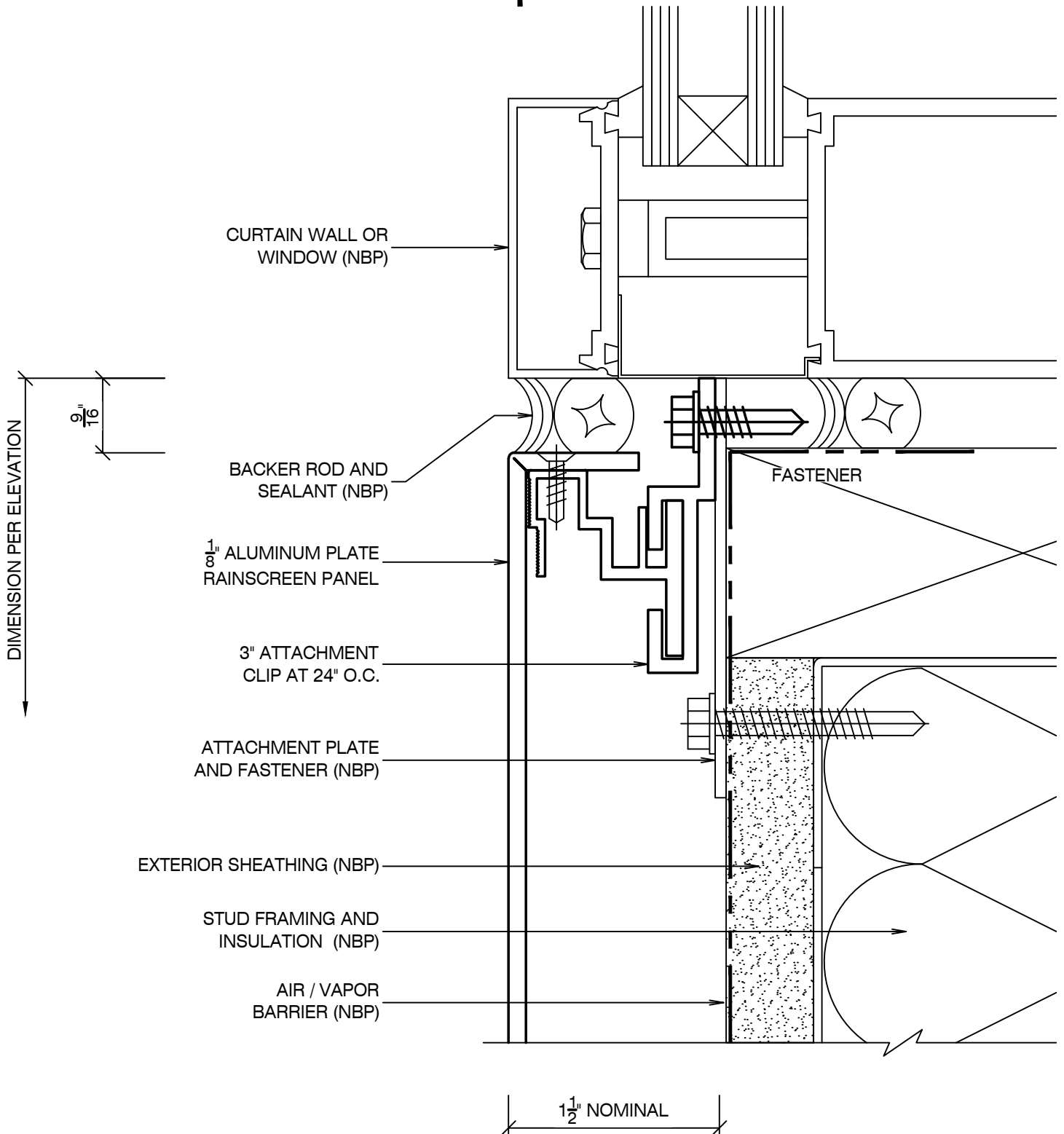
<u>SHEET #</u>	<u>DESCRIPTION</u>	<u>SHEET #</u>	<u>DESCRIPTION</u>
AP-3000RS / 1	PARAPET CAP	AP-3000RS / 8	VERTICAL JOINT
AP-3000RS / 2	HORIZONTAL JOINT	AP-3000RS / 9	OUTSIDE CORNER
AP-3000RS / 3	BASE DETAIL	AP-3000RS / 10	OUTSIDE CORNER (MITERED)
AP-3000RS / 4	WINDOW HEAD	AP-3000RS / 11	INSIDE CORNER
AP-3000RS / 5	WINDOW SILL	AP-3000RS / 12	INSIDE CORNER (MITERED)
AP-3000RS / 6	WINDOW JAMB	AP-3000RS / 13	OPTIONAL VERTICAL REVEAL
AP-3000RS / 7	JAMB DETAIL	AP-3000RS / 14	OPTIONAL HORIZONTAL REVEAL

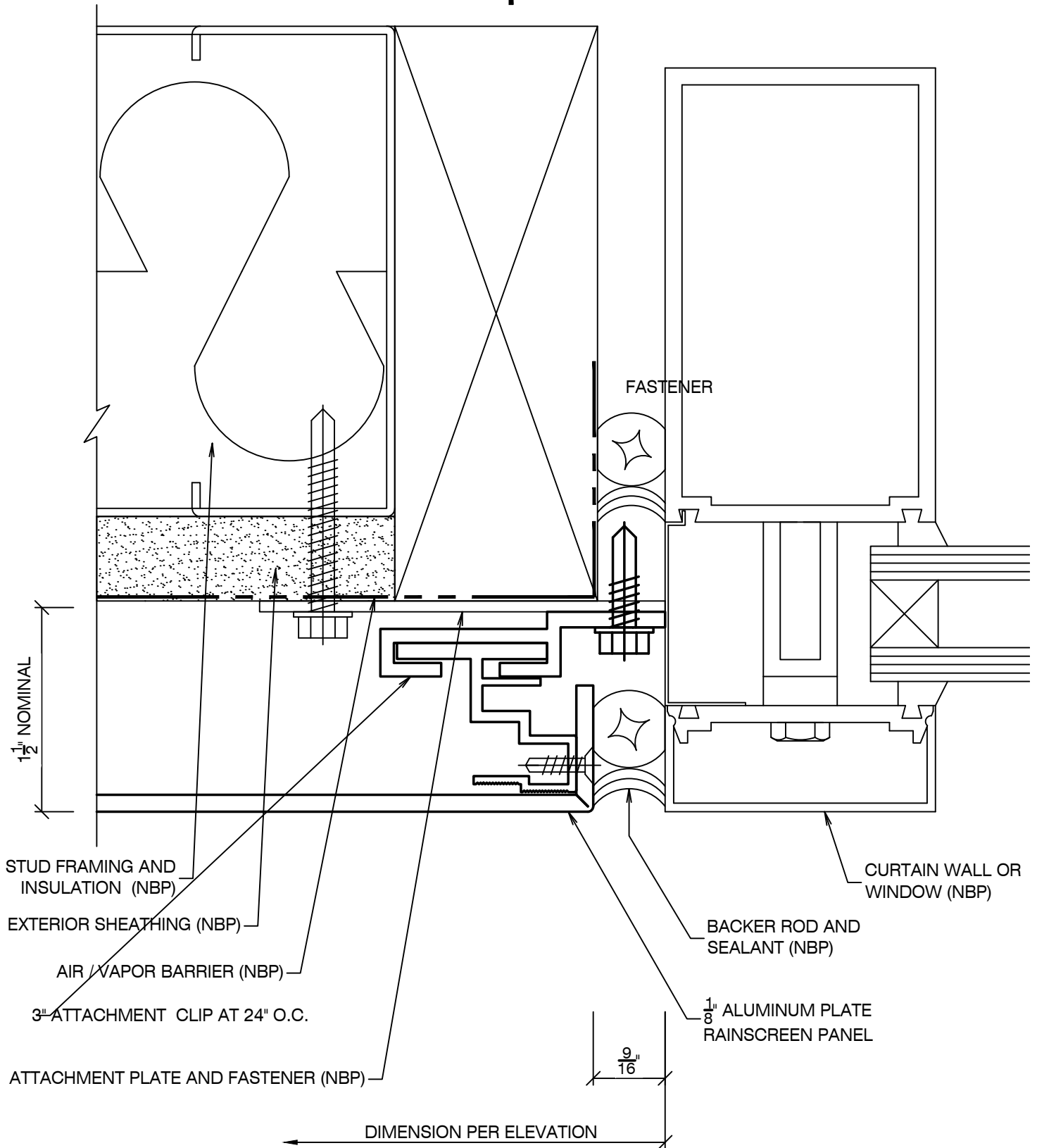




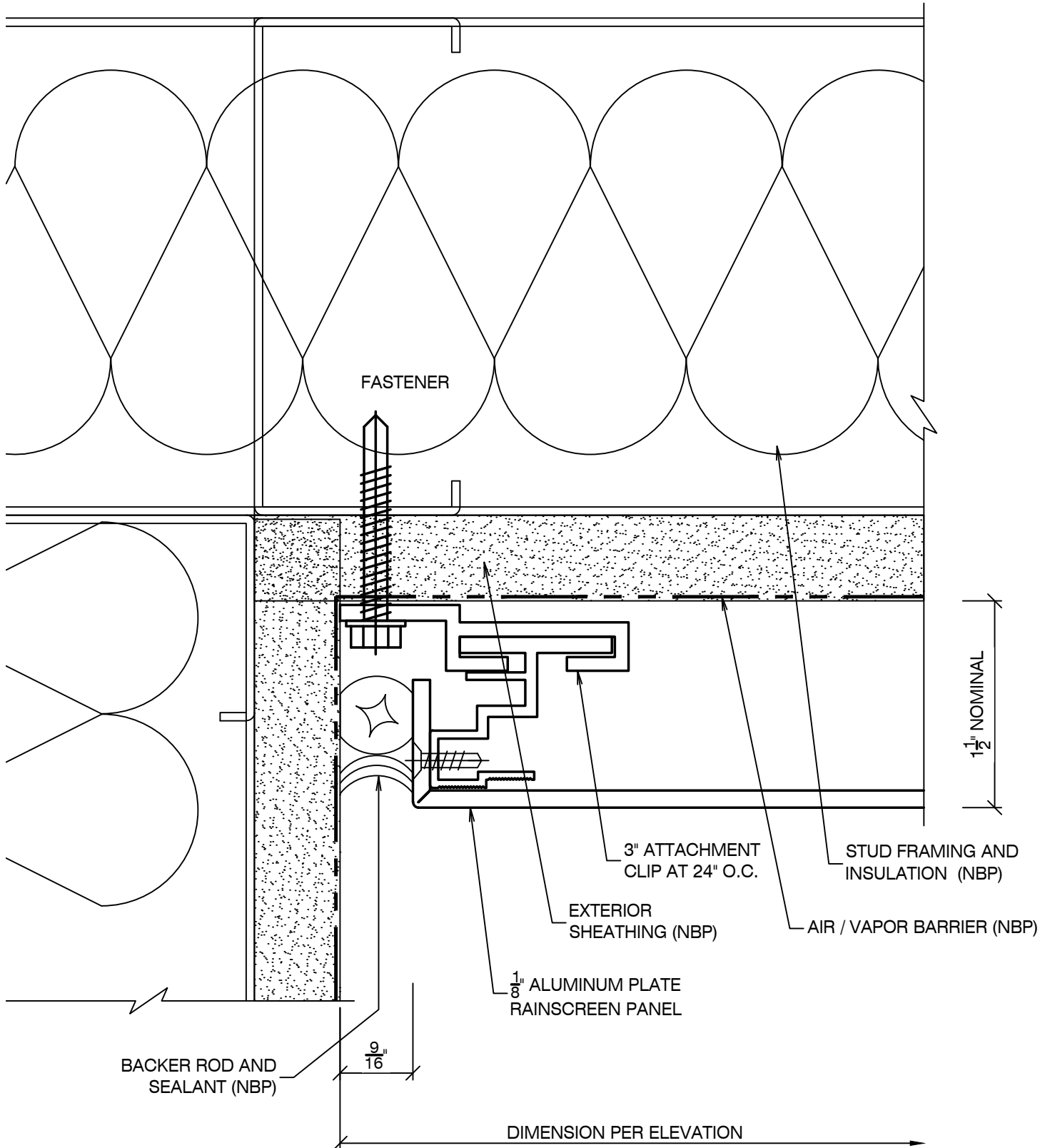


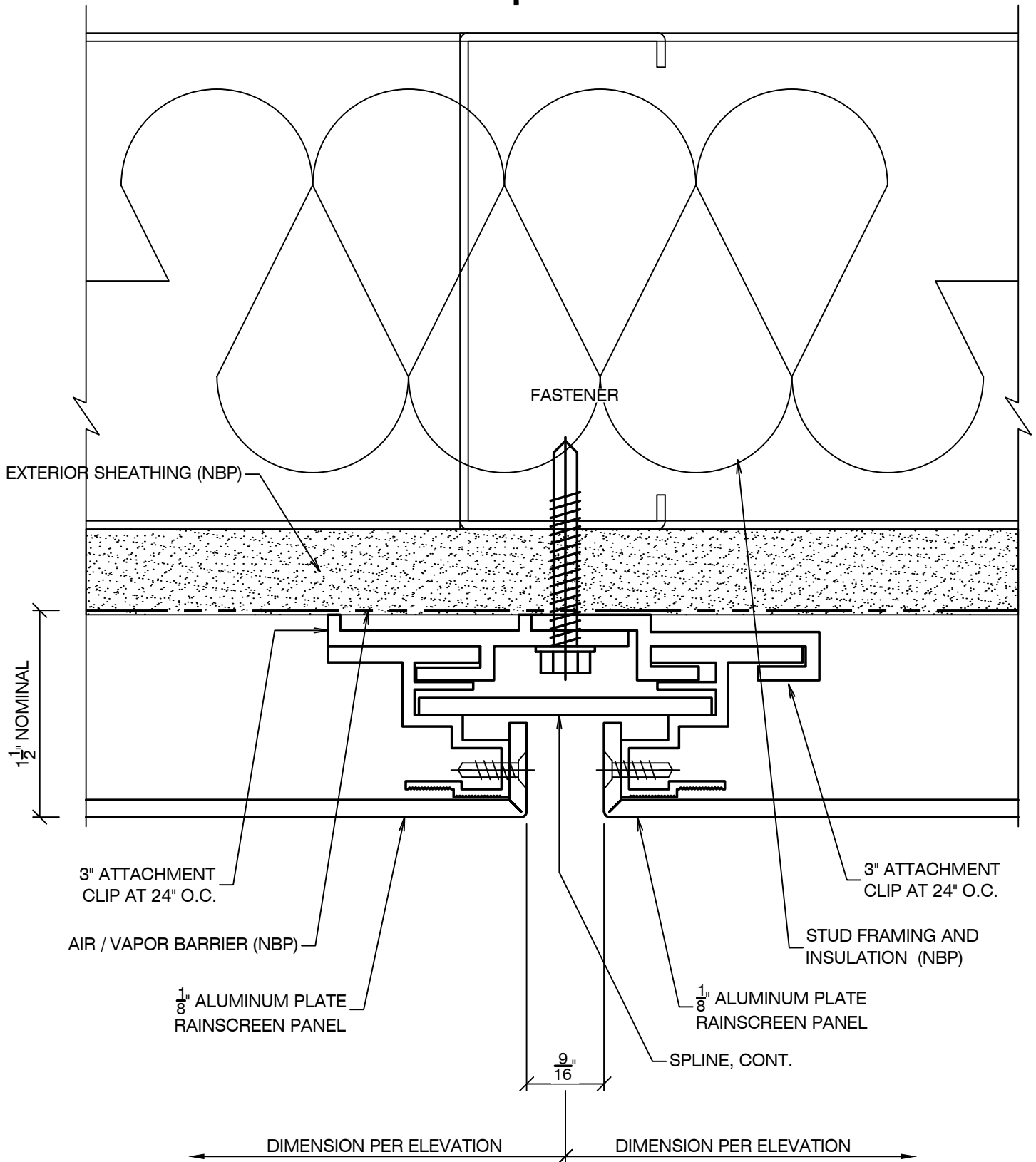






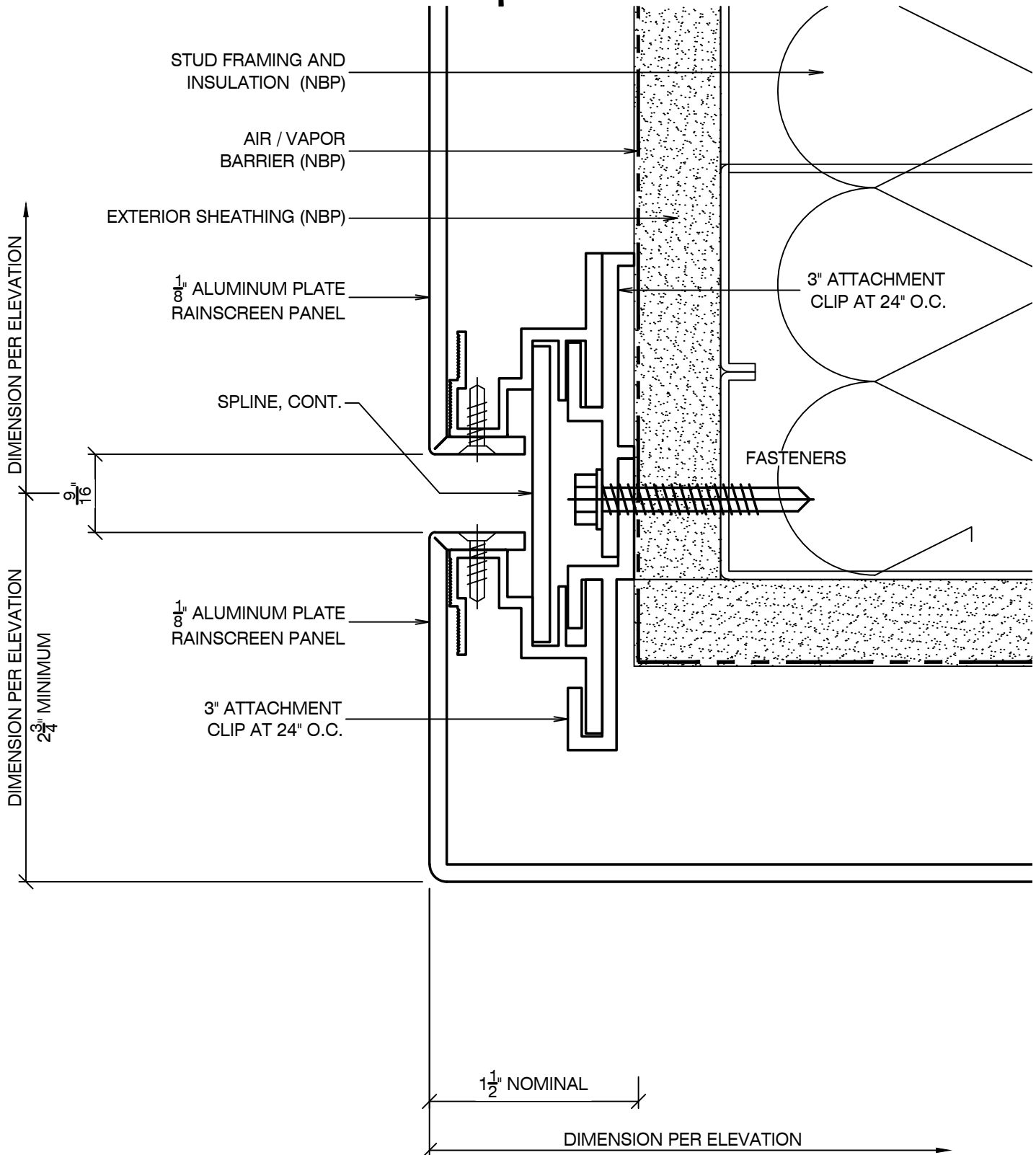






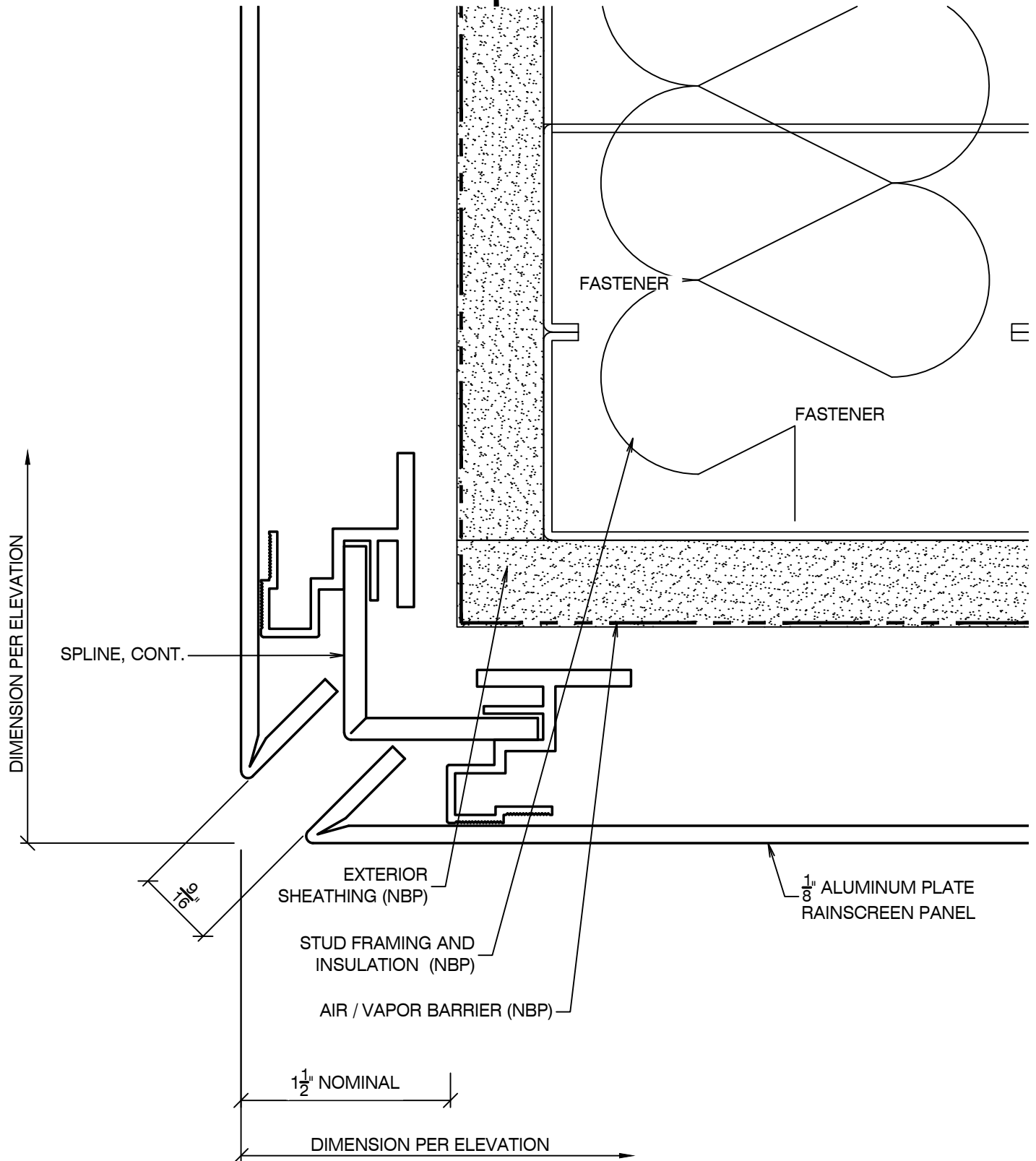
Construction Products, Inc.

### Typical Outside Corner Detail



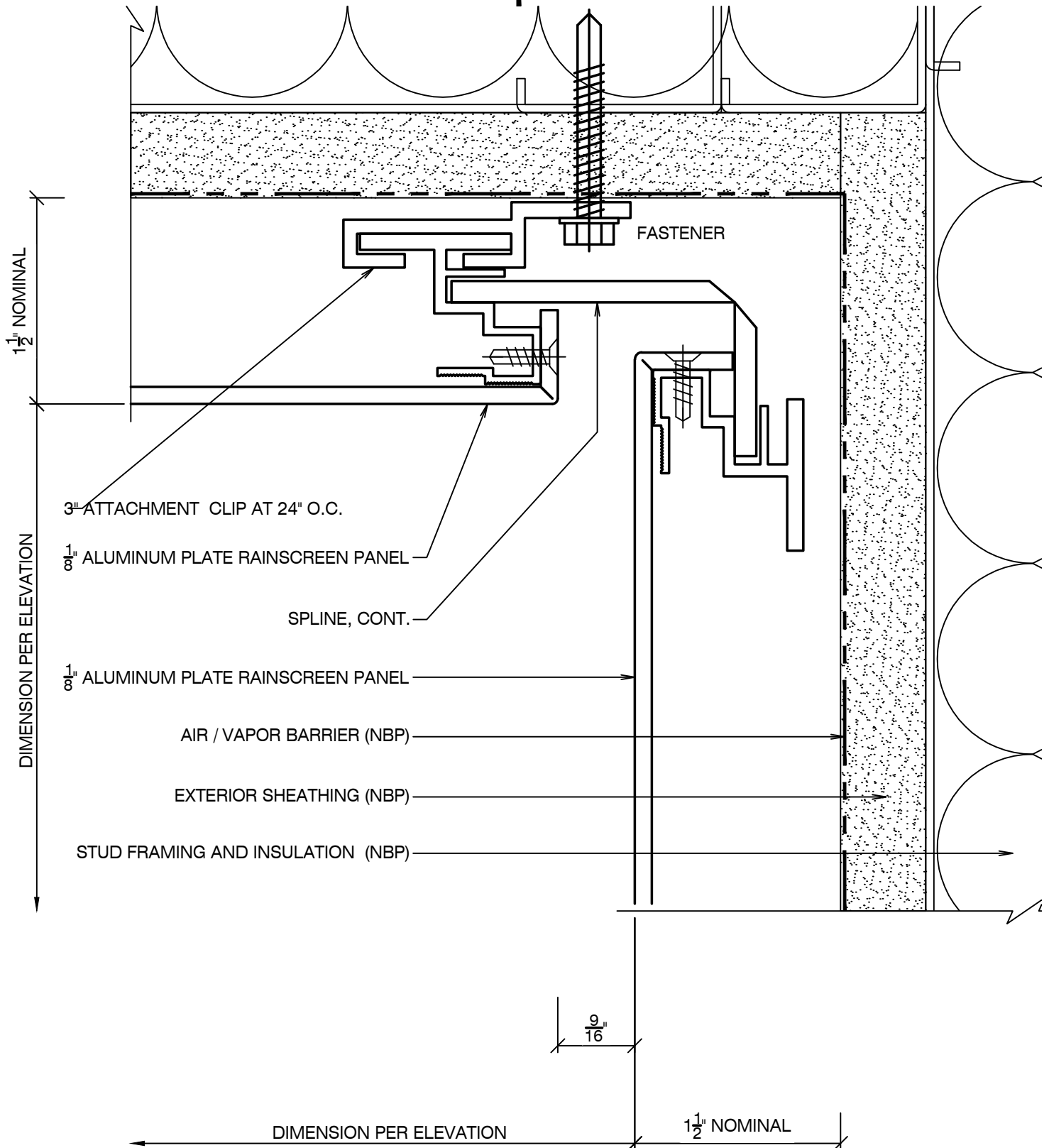
Construction Products, Inc.

### Mitered Outside Corner Detail



Construction Products, Inc.

### Typical Inside Corner Detail



Construction Products, Inc.

### Mitered Inside Corner Detail

