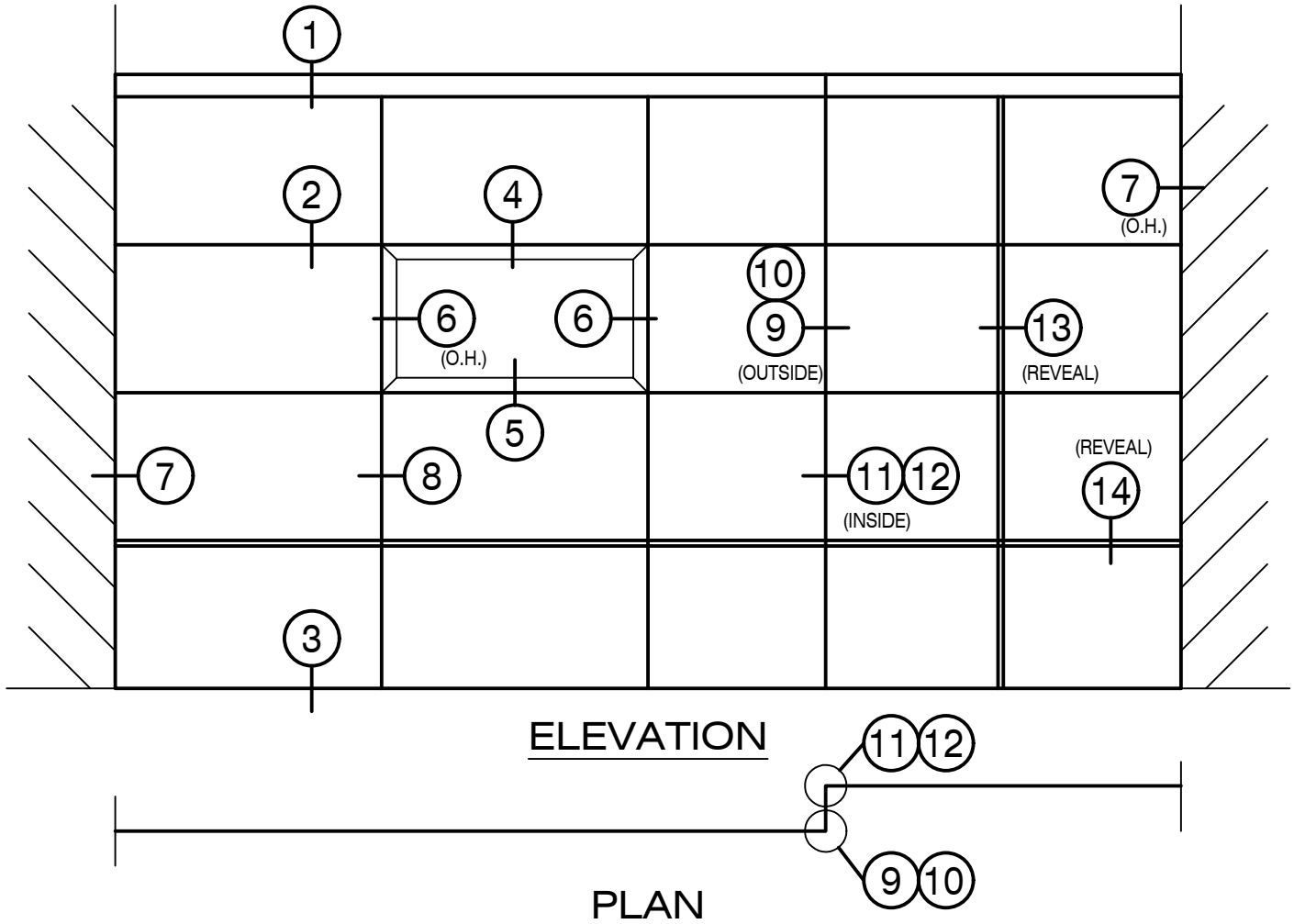


1. Most details included herein are drawn to full scale.
2. Details shown herein, illustrate 2" foam panels. Other thickness and cores are available. Refer to other sections of this literature for additional options or consult Protean for any special requirements.
3. In general, panel attachment should be made along the long edge of the panels.
4. Details as shown herein illustrate a horizontal installation with subgirts and panel attachment located at the horizontal joints. For a vertical panel installation, modify details to install subgirts and panels vertically.
5. Alternate subgirt layouts are available where subgirts can be oriented in the opposite direction of the long edge of the panels. Contact Protean for further information on these types of installations.
6. The enclosed details represent typical standard details for the FM-100 system. In so much as the FM-100 is a custom designed system, this is only the beginning of the possibilities. Consult Protean for assistance in developing custom details for your application.



INDEX

SHEET #	DESCRIPTION	SHEET #	DESCRIPTION
FM-100 / 1	PARAPET CAP	FM-100 / 8	VERTICAL JOINT
FM-100 / 2	HORIZONTAL JOINT	FM-100 / 9	OUTSIDE CORNER
FM-100 / 3	BASE DETAIL	FM-100 / 10	OUTSIDE CORNER (BENT)
FM-100 / 4	WINDOW HEAD	FM-100 / 11	INSIDE CORNER
FM-100 / 5	WINDOW SILL	FM-100 / 12	INSIDE CORNER
FM-100 / 6	WINDOW JAMB	FM-100 / 13	VERTICAL REVEAL
FM-100 / 7	JAMB DETAIL	FM-100 / 14	HORIZONTAL REVEAL

