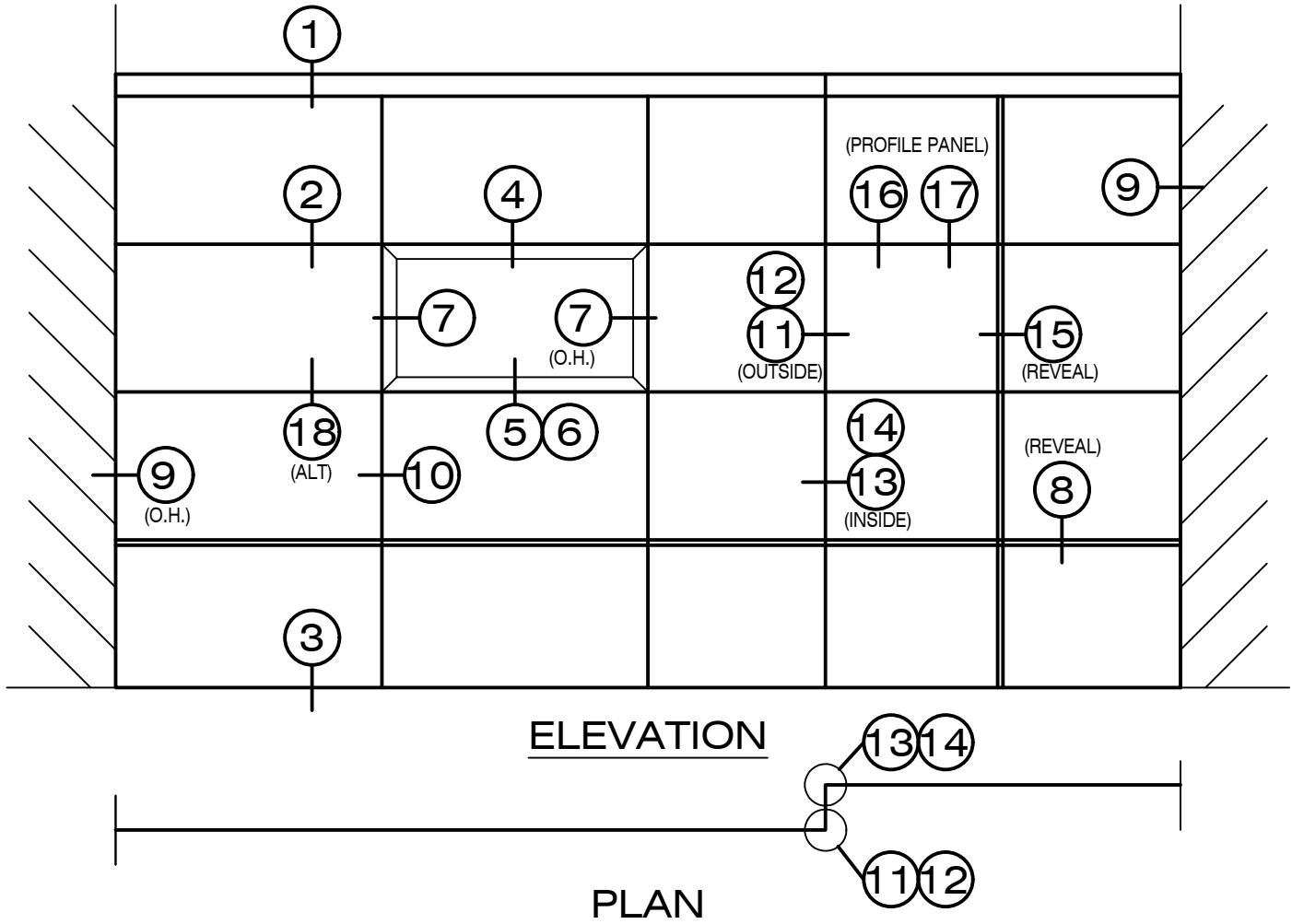
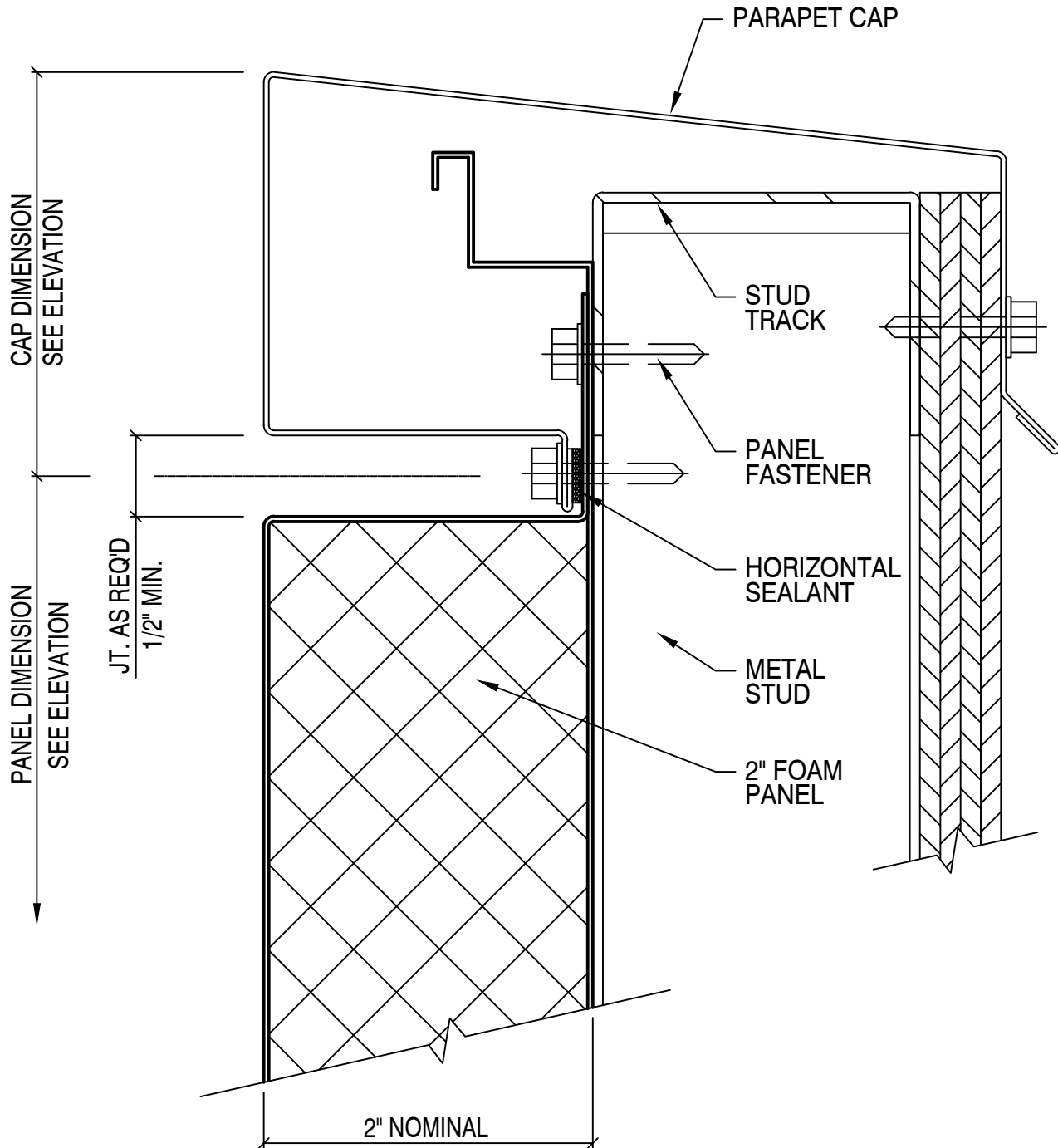


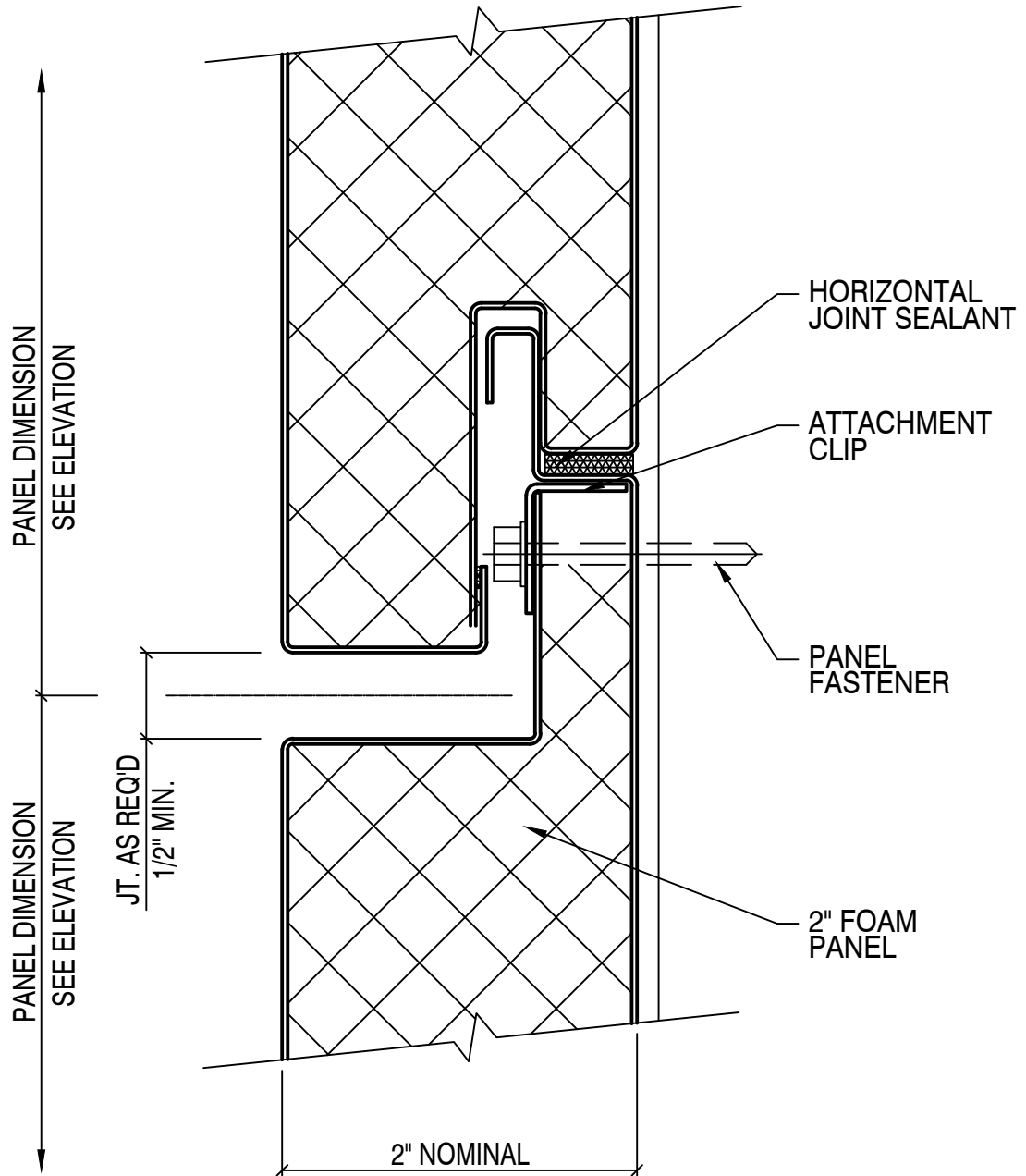
1. Most details included herein are drawn to full scale.
2. Details shown herein, illustrate 2" foam panels. Other thickness and cores are available. Refer to other sections of this literature for additional options or consult Protean for any special requirements.
3. In general, panel attachment should be made along the long edge of the panels.
4. Details as shown herein illustrate a horizontal installation with subgirts and panel attachment located at the horizontal joints. For a vertical panel installation, modify details to install subgirts and panels vertically.
5. Alternate subgirt layouts are available where subgirts can be oriented in the opposite direction of the long edge of the panels. Contact Protean for further information on these types of installations.
6. The enclosed details represent typical standard details for the FM-200 system. In so much as the FM-200 is a custom designed system, this is only the beginning of the possibilities. Consult Protean for assistance in developing custom details for your application.

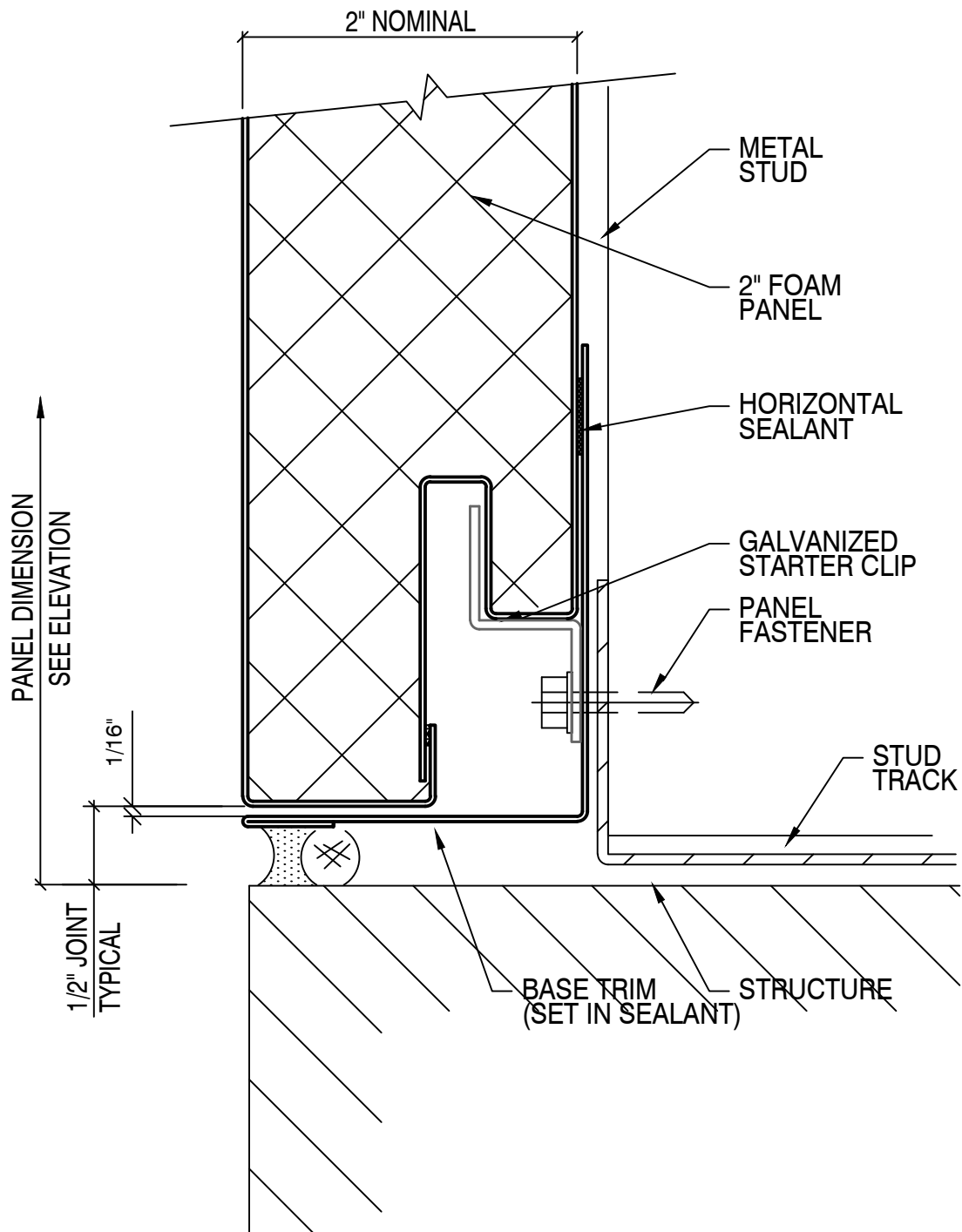


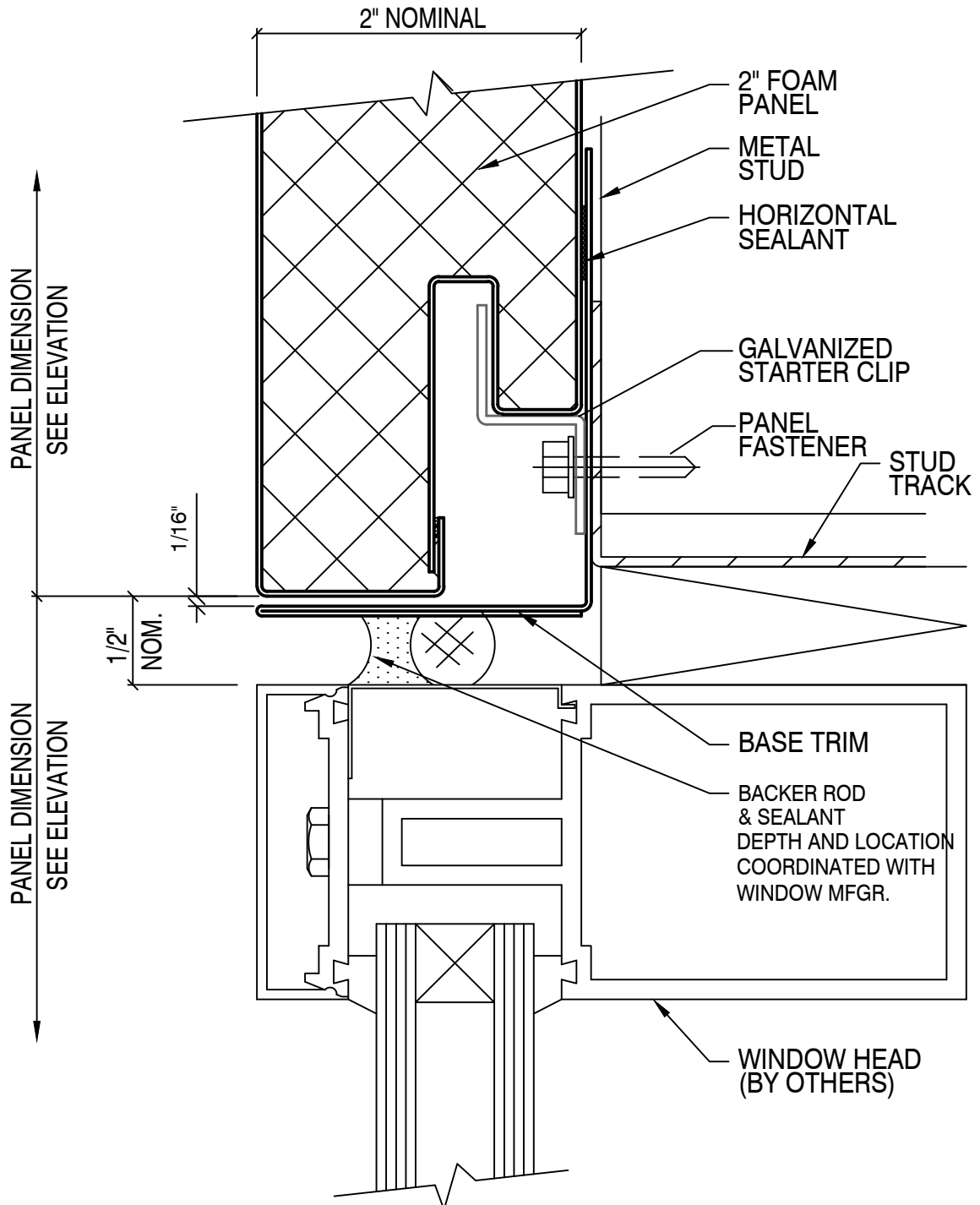
INDEX

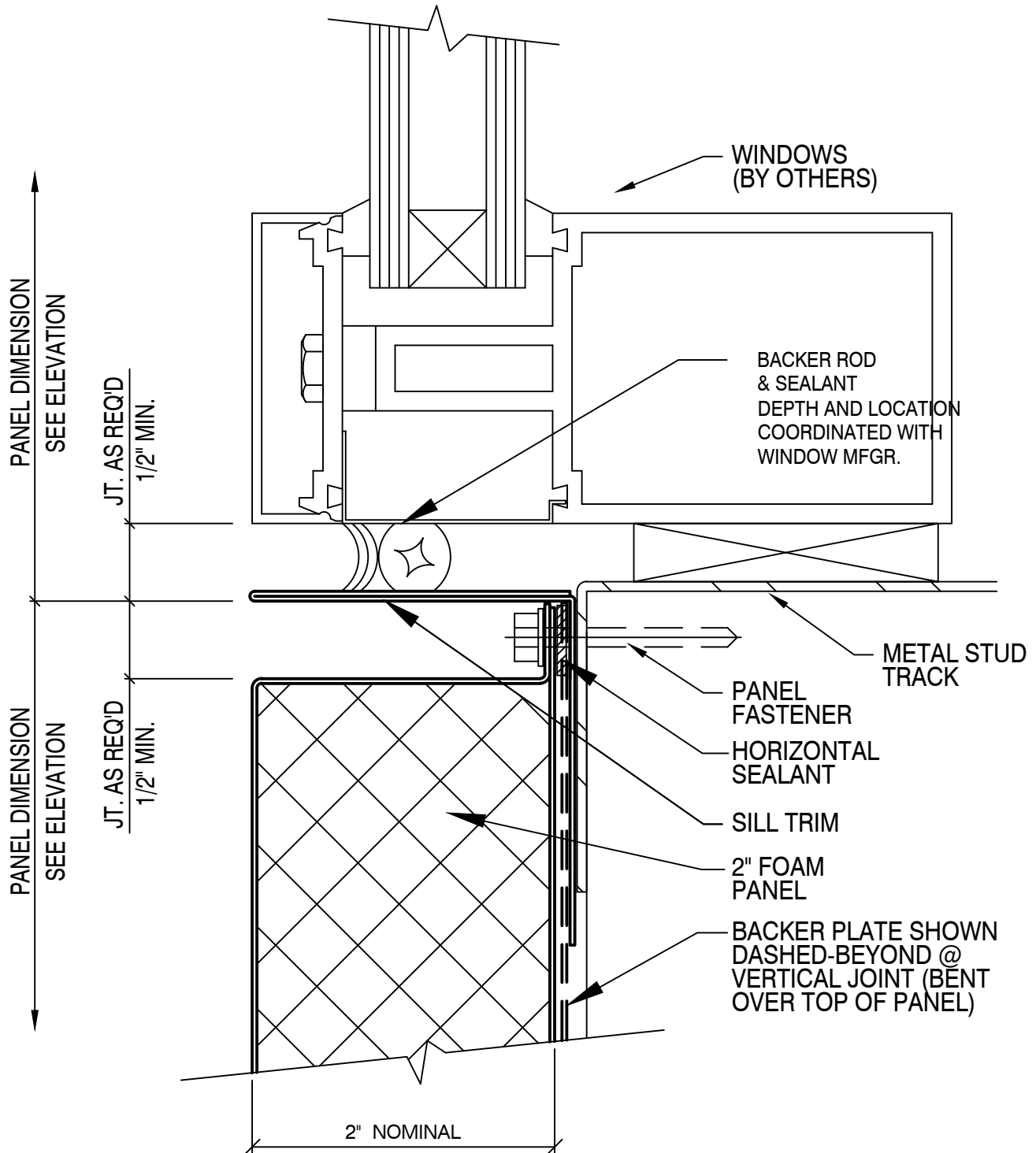
<u>SHEET #</u>	<u>DESCRIPTION</u>	<u>SHEET #</u>	<u>DESCRIPTION</u>
FM-200 / 1	PARAPET CAP	FM-200 / 10	VERTICAL JOINT
FM-200 / 2	HORIZONTAL JOINT	FM-200 / 11	OUTSIDE CORNER (JT.)
FM-200 / 3	BASE DETAIL	FM-200 / 12	OUTSIDE CORNER (BENT)
FM-200 / 4	WINDOW HEAD	FM-200 / 13	INSIDE CORNER
FM-200 / 5	WINDOW SILL	FM-200 / 14	INSIDE CORNER
FM-200 / 6	WINDOW SILL (ALTERNATE)	FM-200 / 15	VERTICAL REVEAL
FM-200 / 7	WINDOW JAMB	FM-200 / 16	HORIZ. JT.-PROFILE PANEL
FM-200 / 8	HORIZONTAL REVEAL	FM-200 / 17	PROFILE PANEL TRANSITION
FM-200 / 9	JAMB DETAIL	FM-200 / 18	HORIZ JT.-VERT PNL SYSTEM

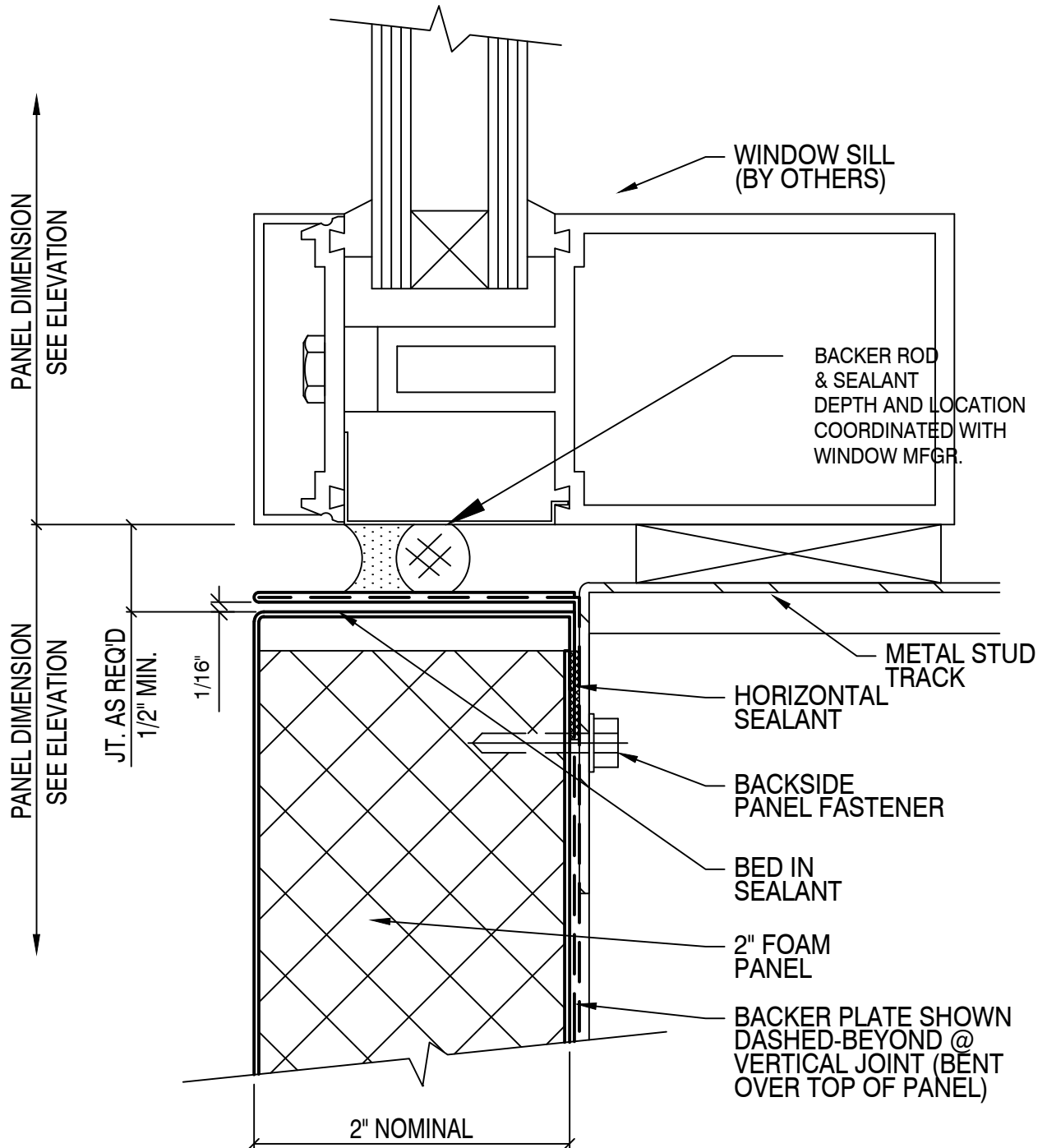










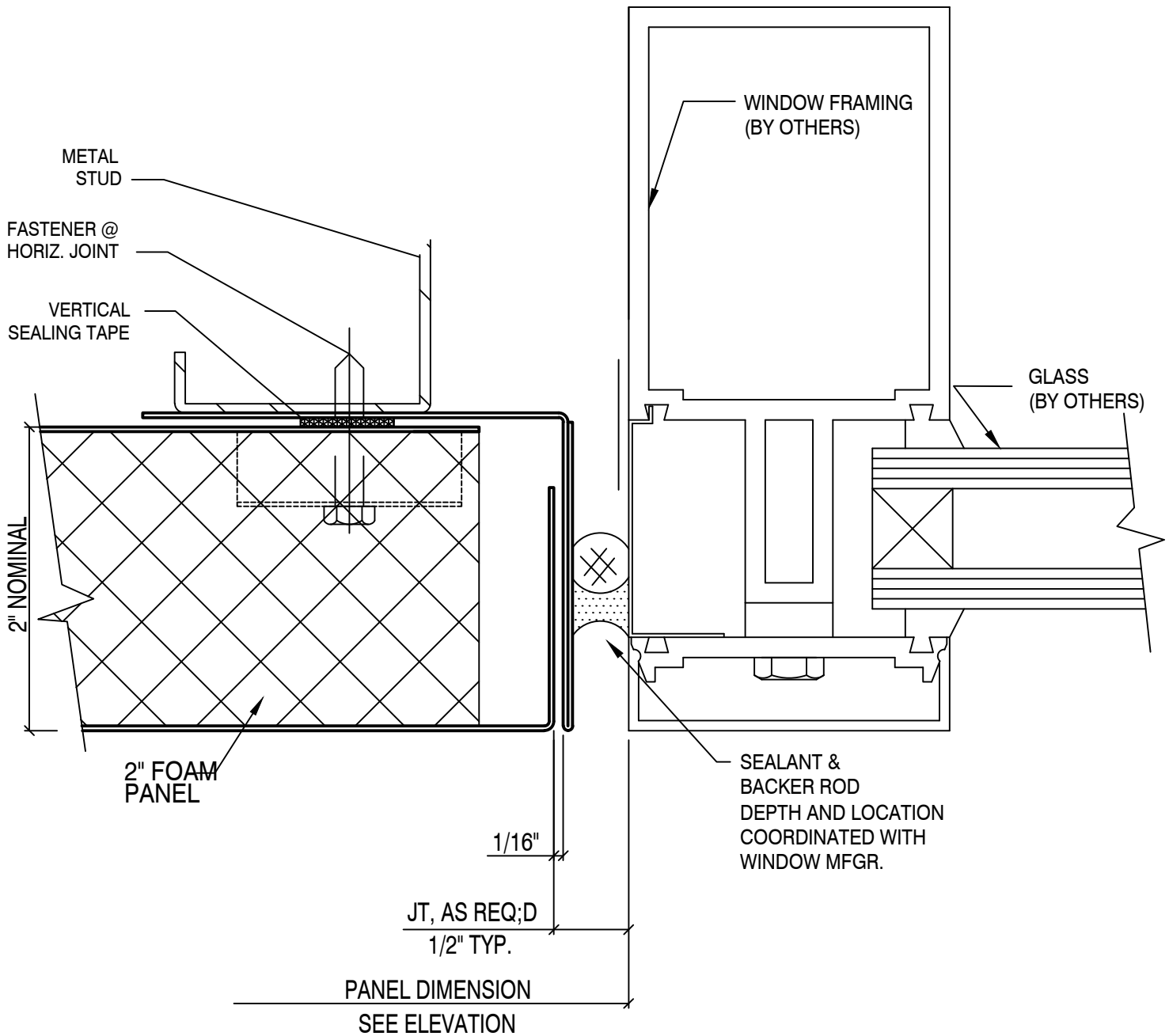


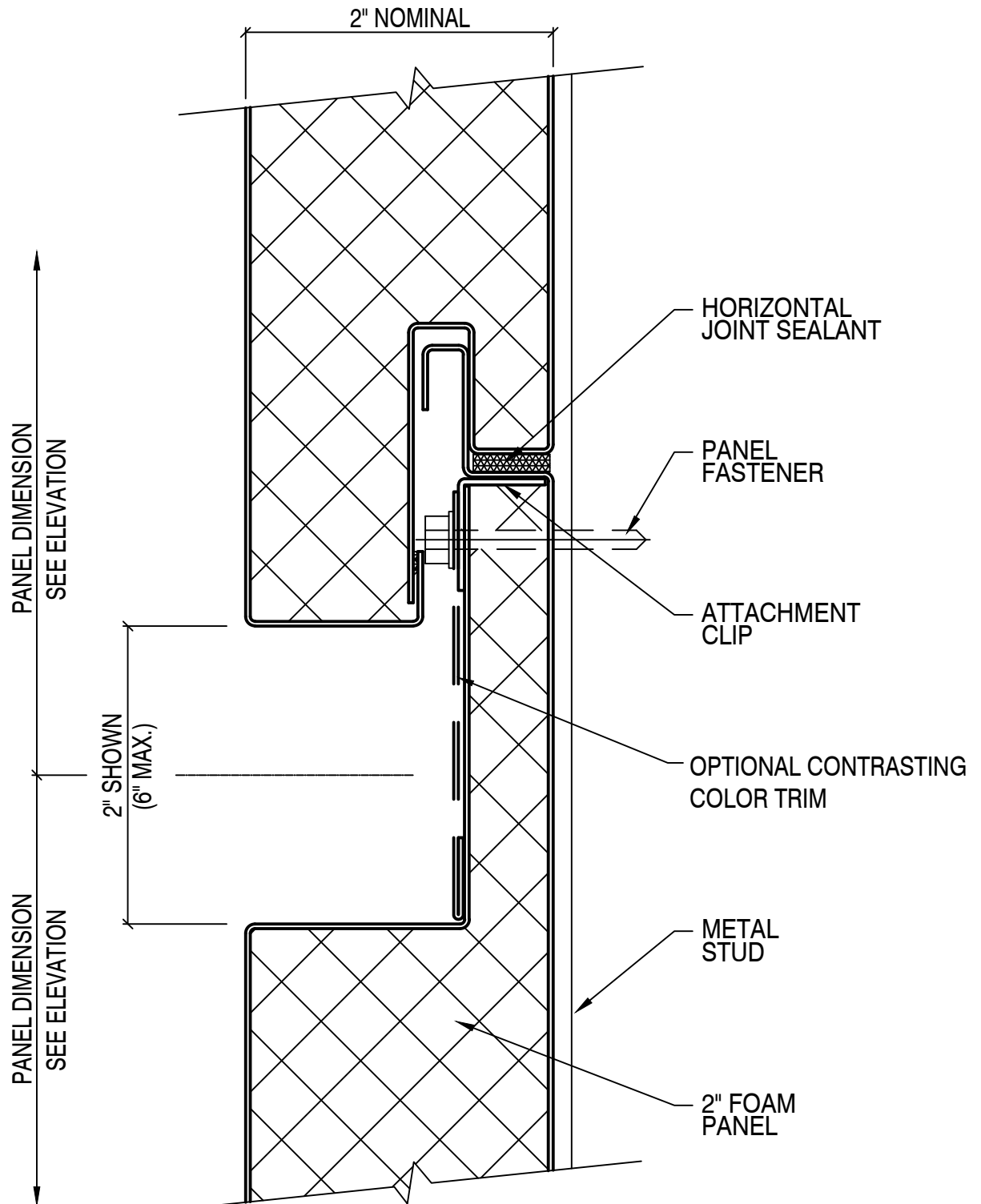
Prötean

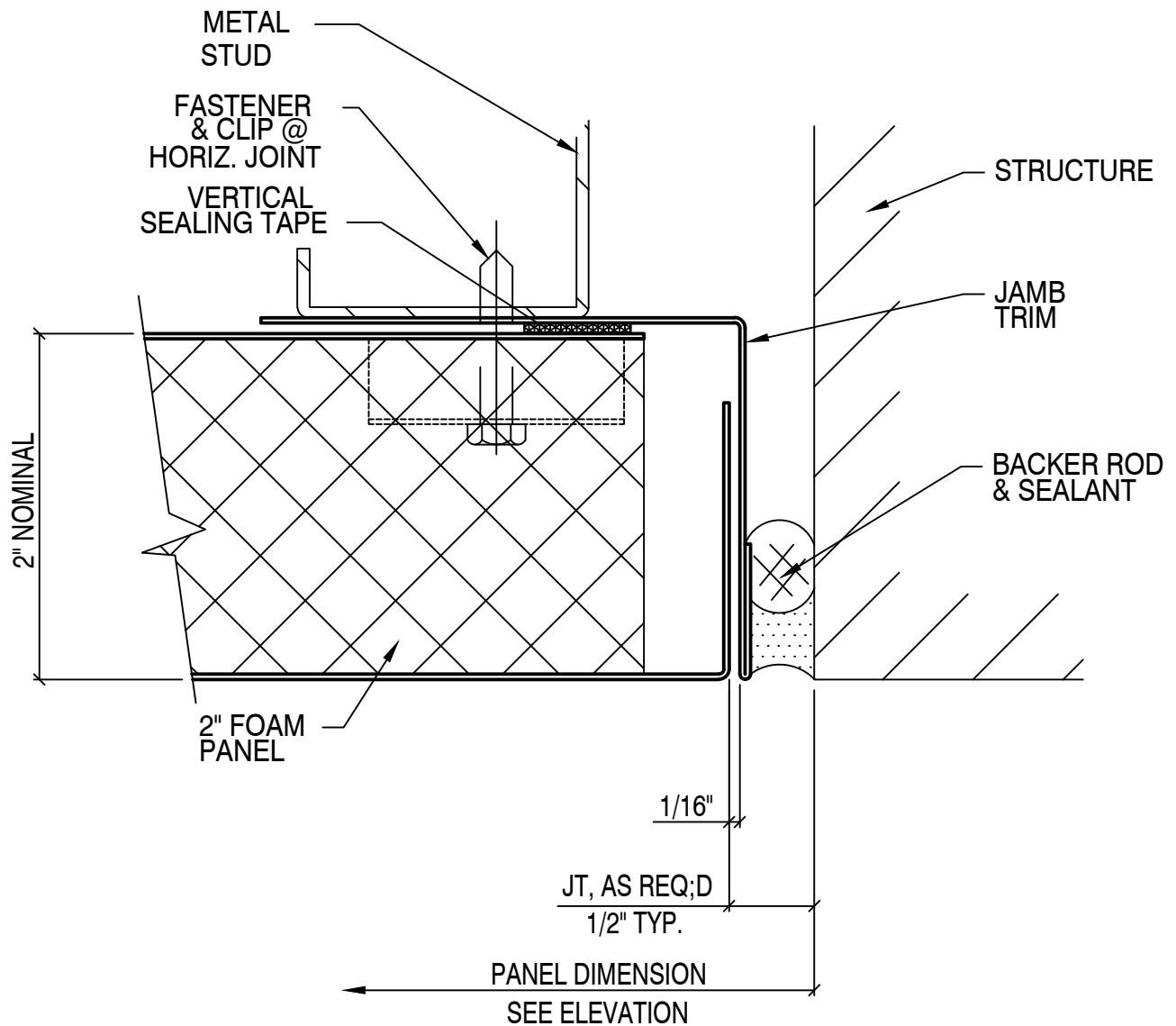
Construction Products, Inc.

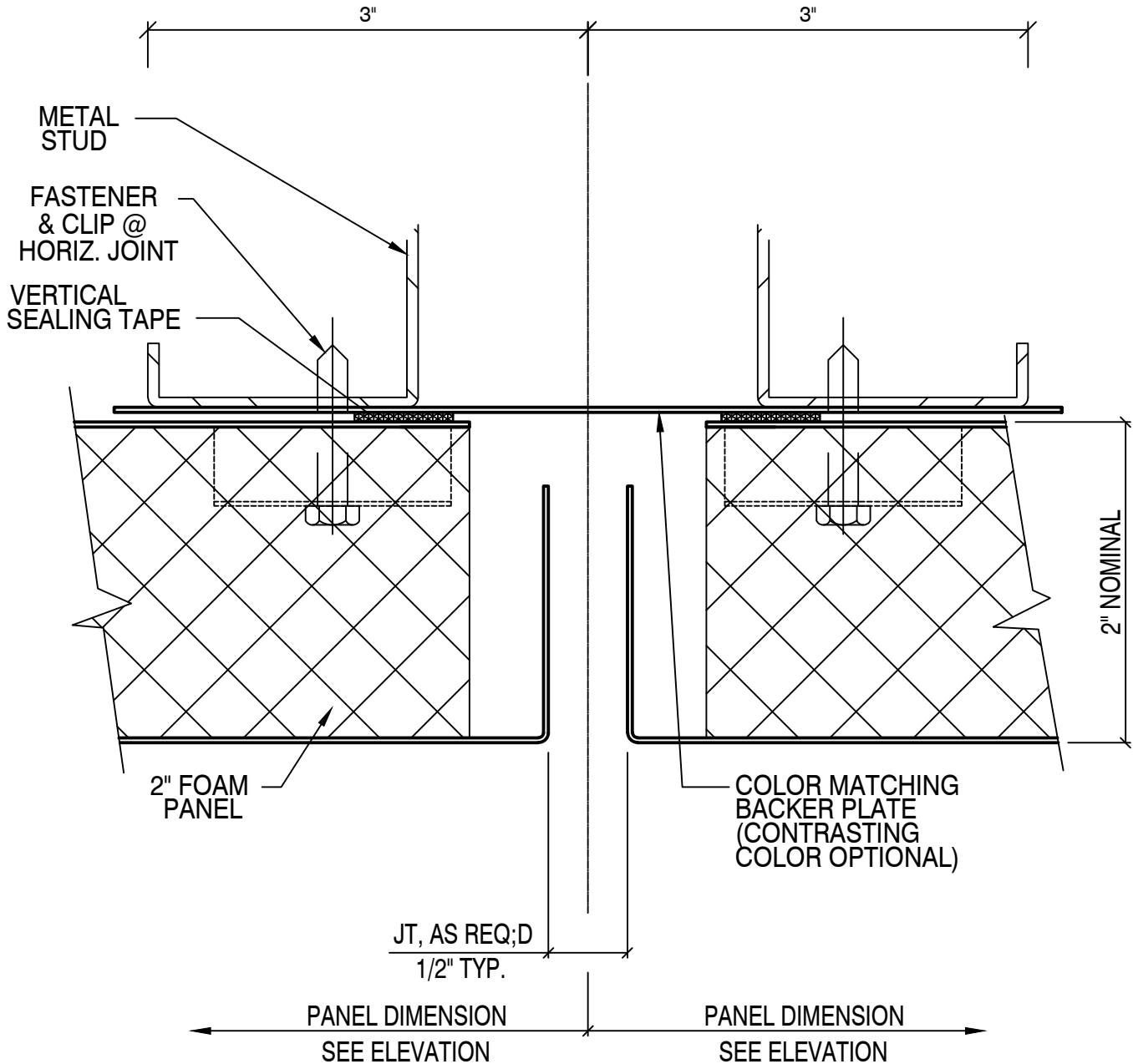
2" Foam Panels FM-200 Standard Details

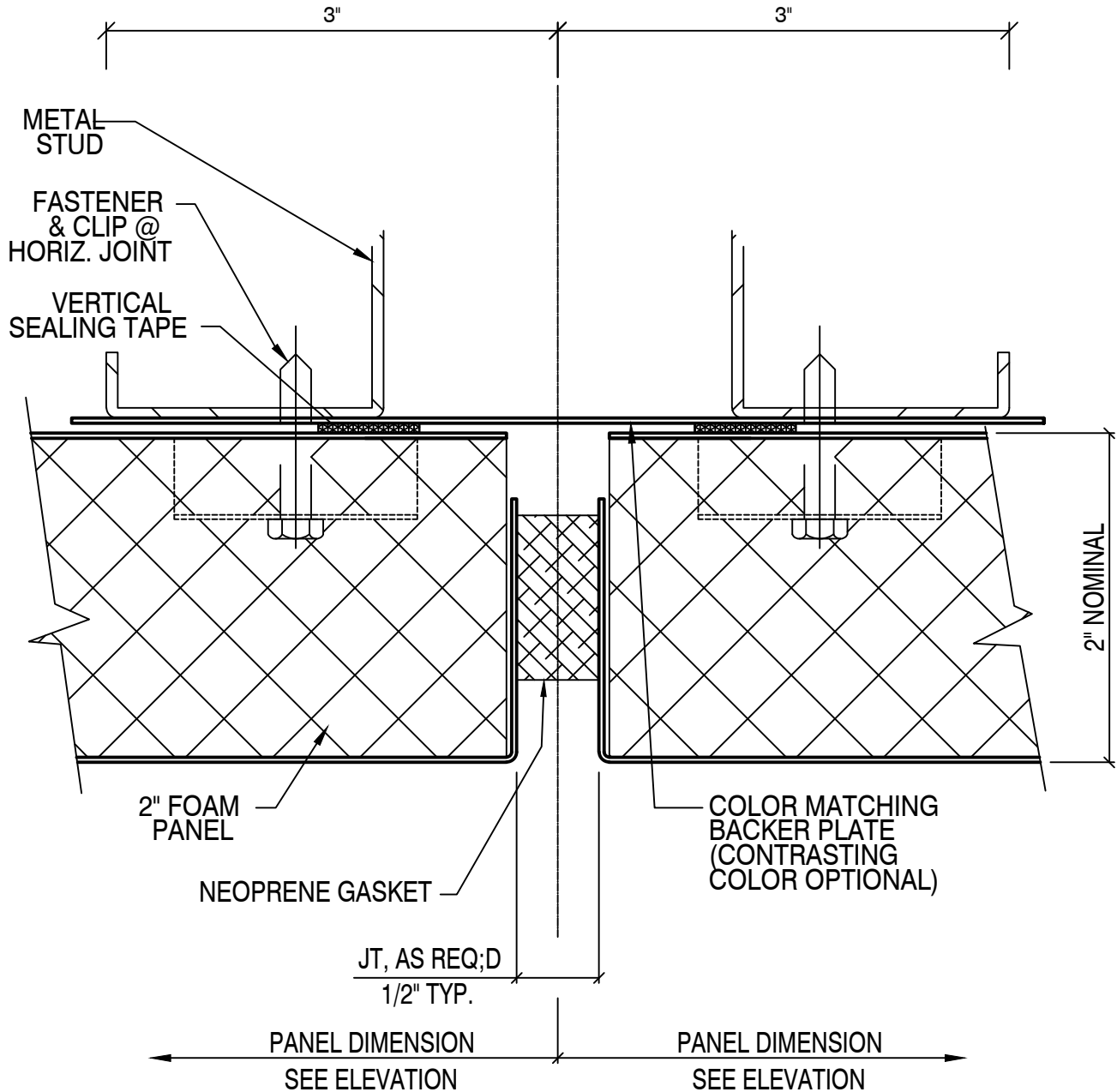
Typical Window Jamb Detail

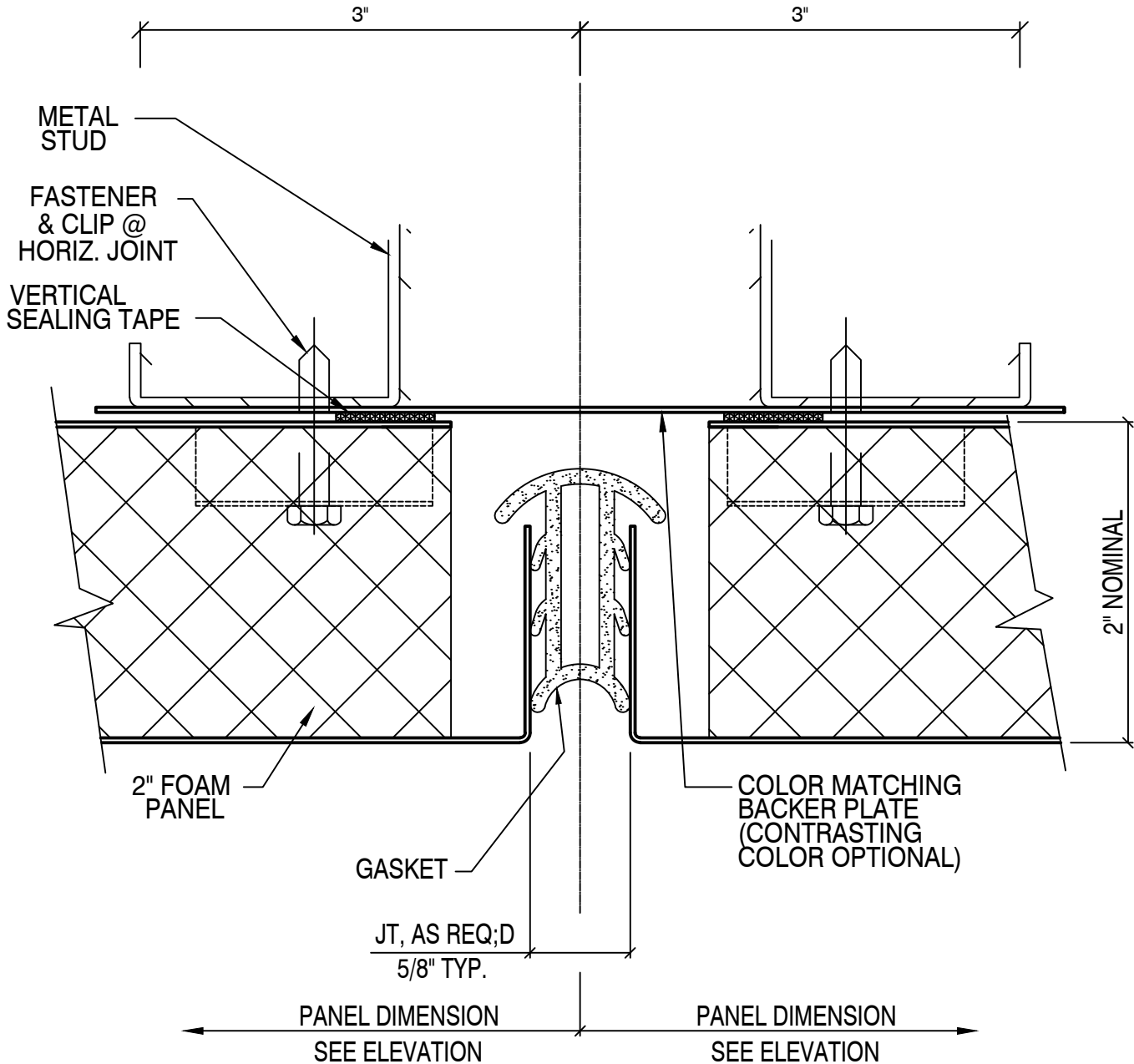


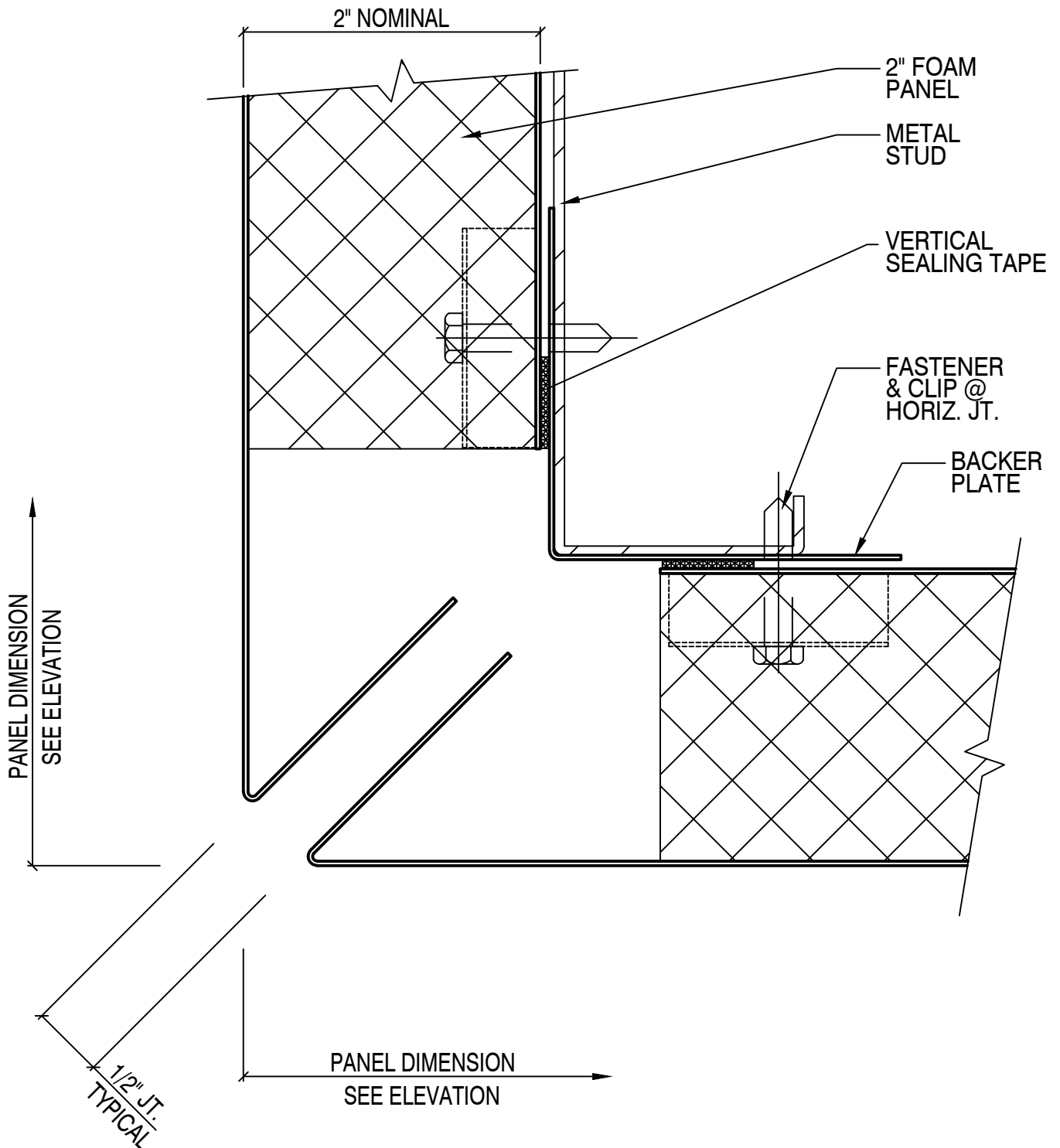


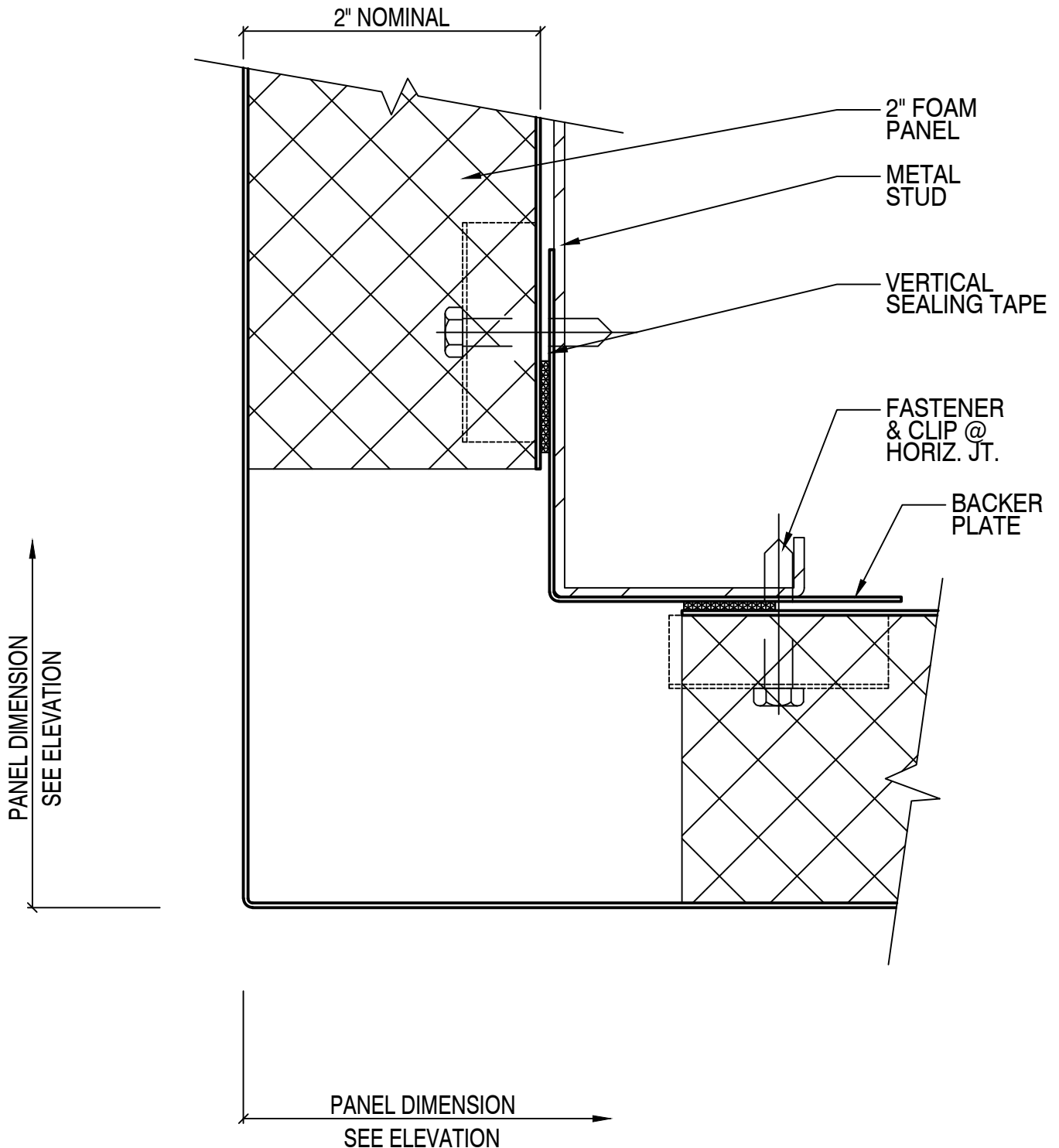


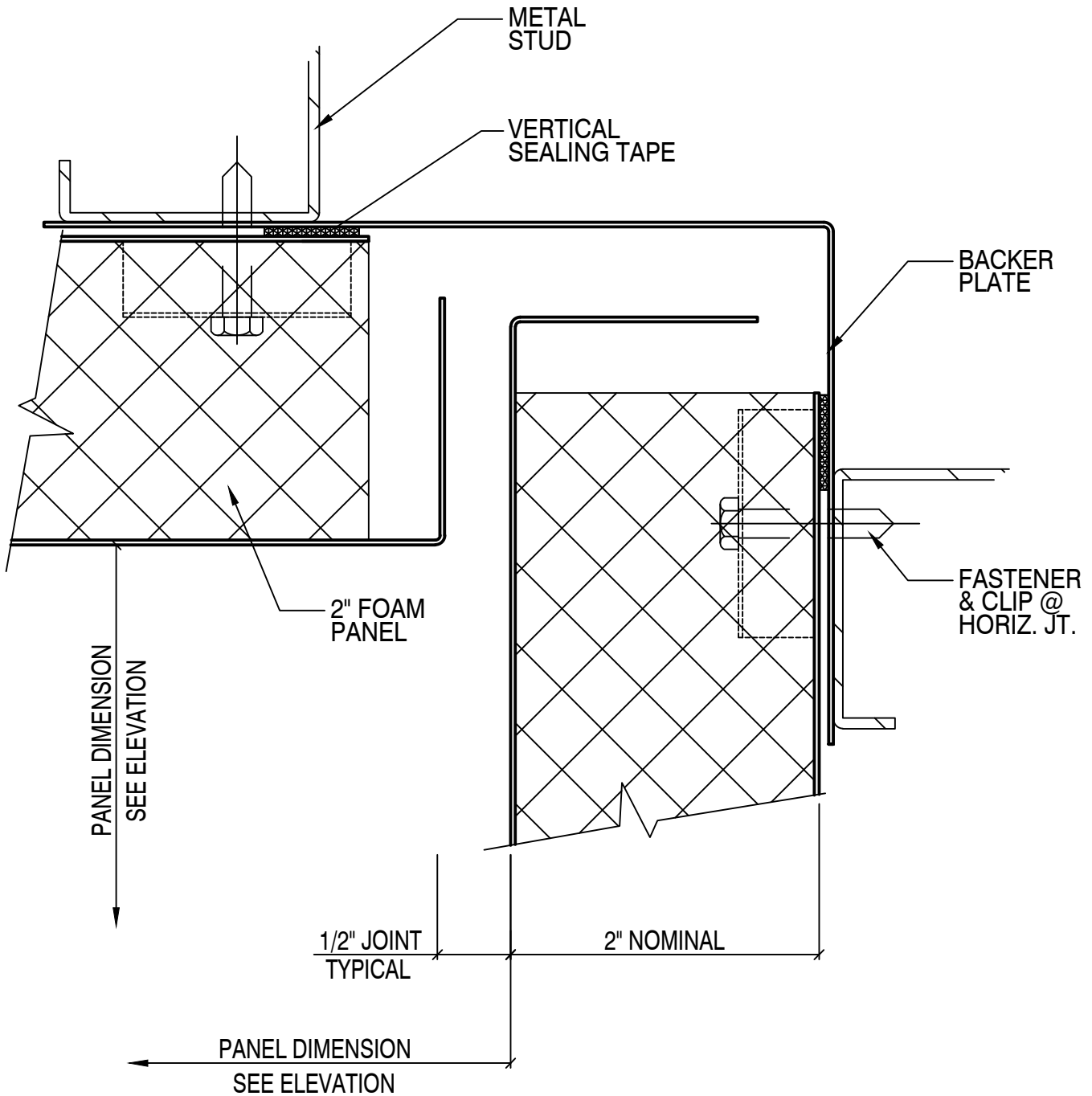


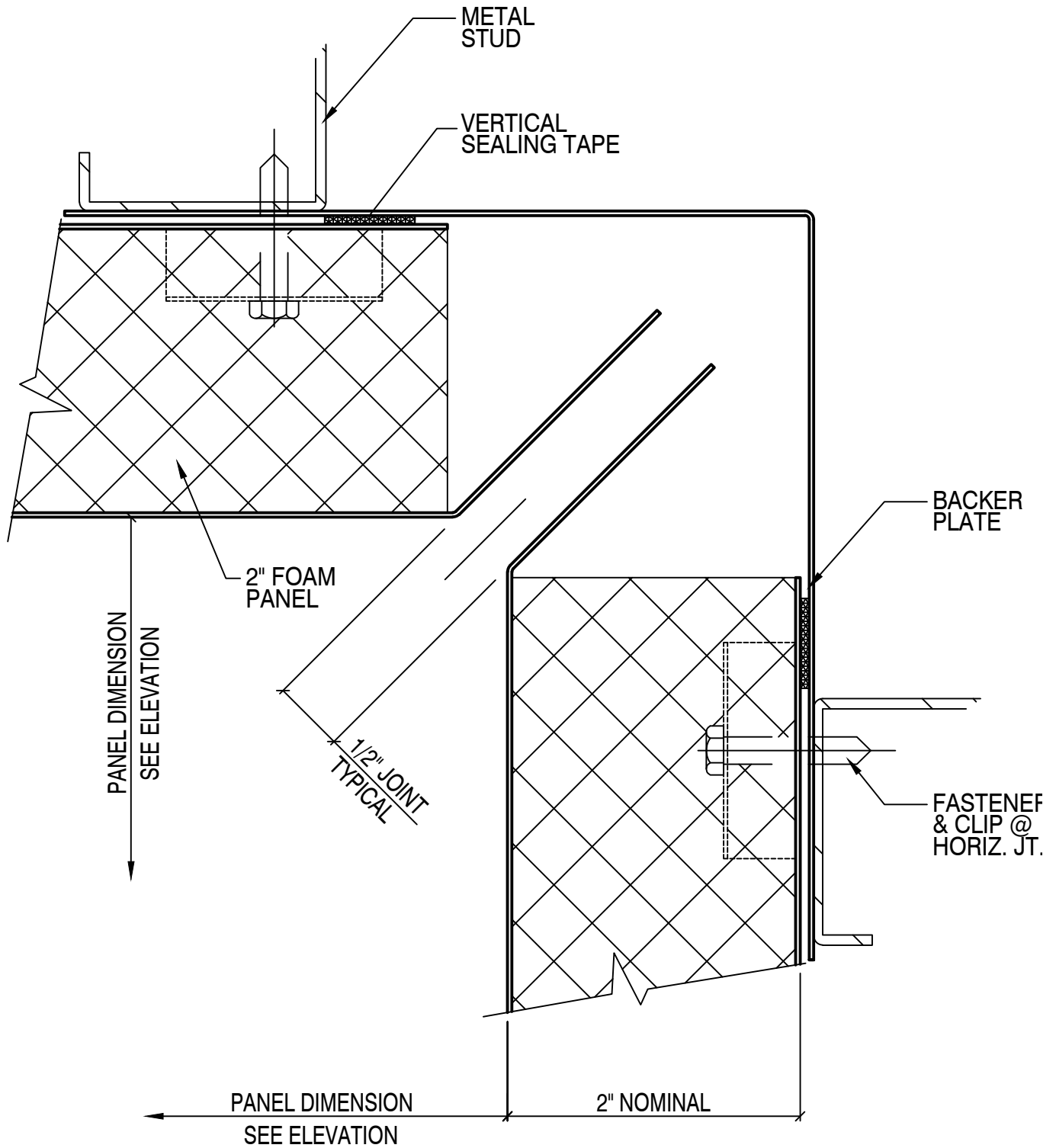


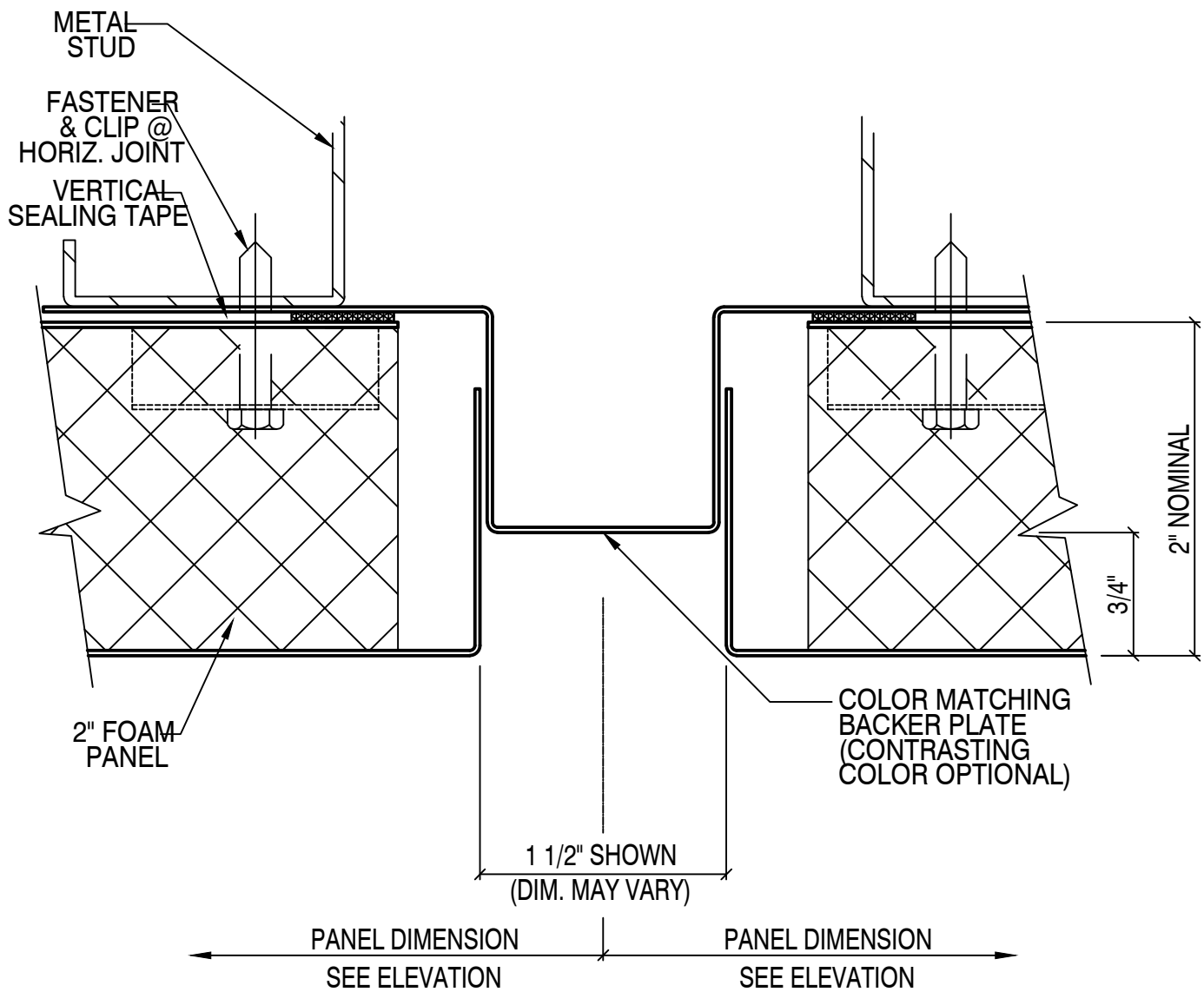


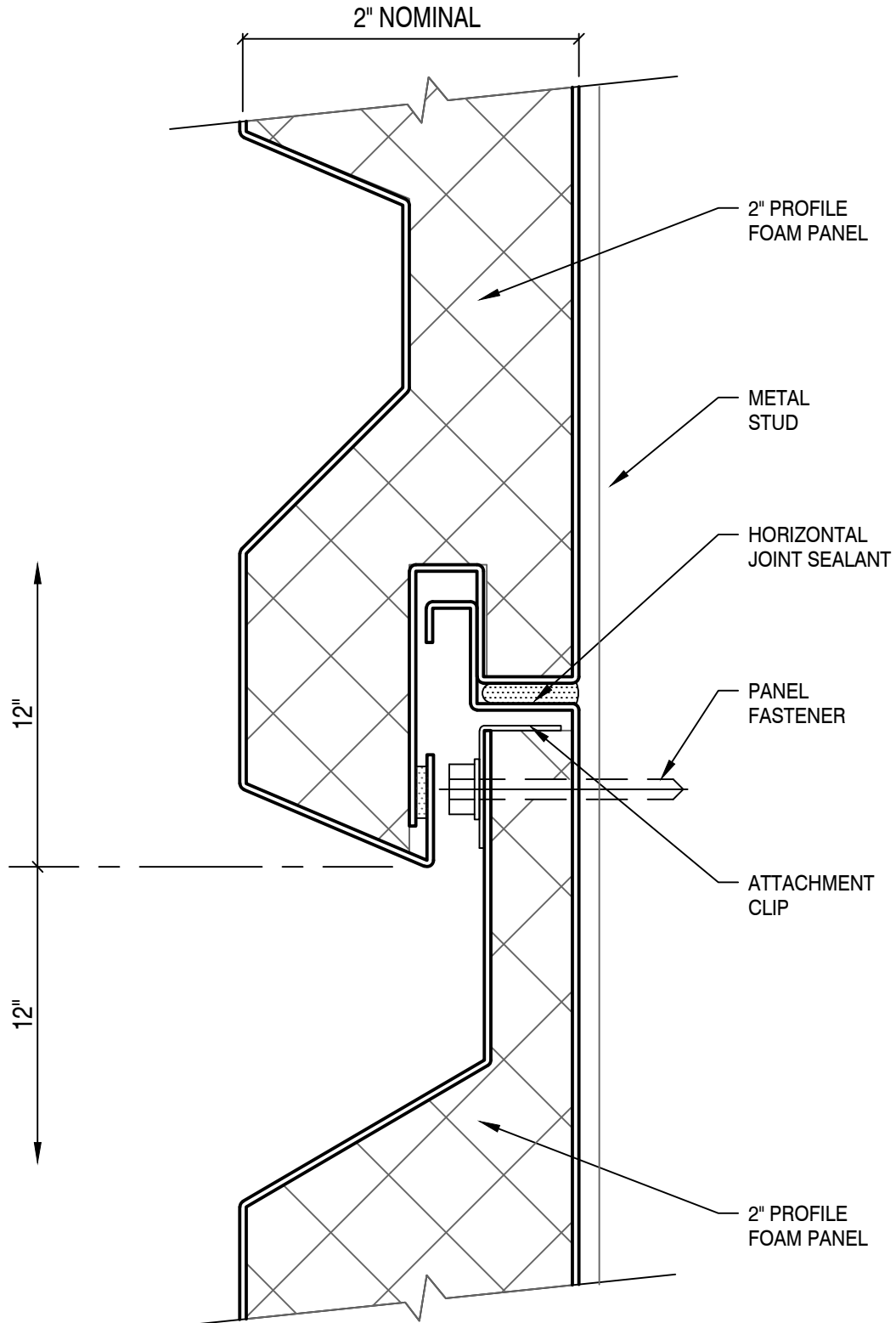


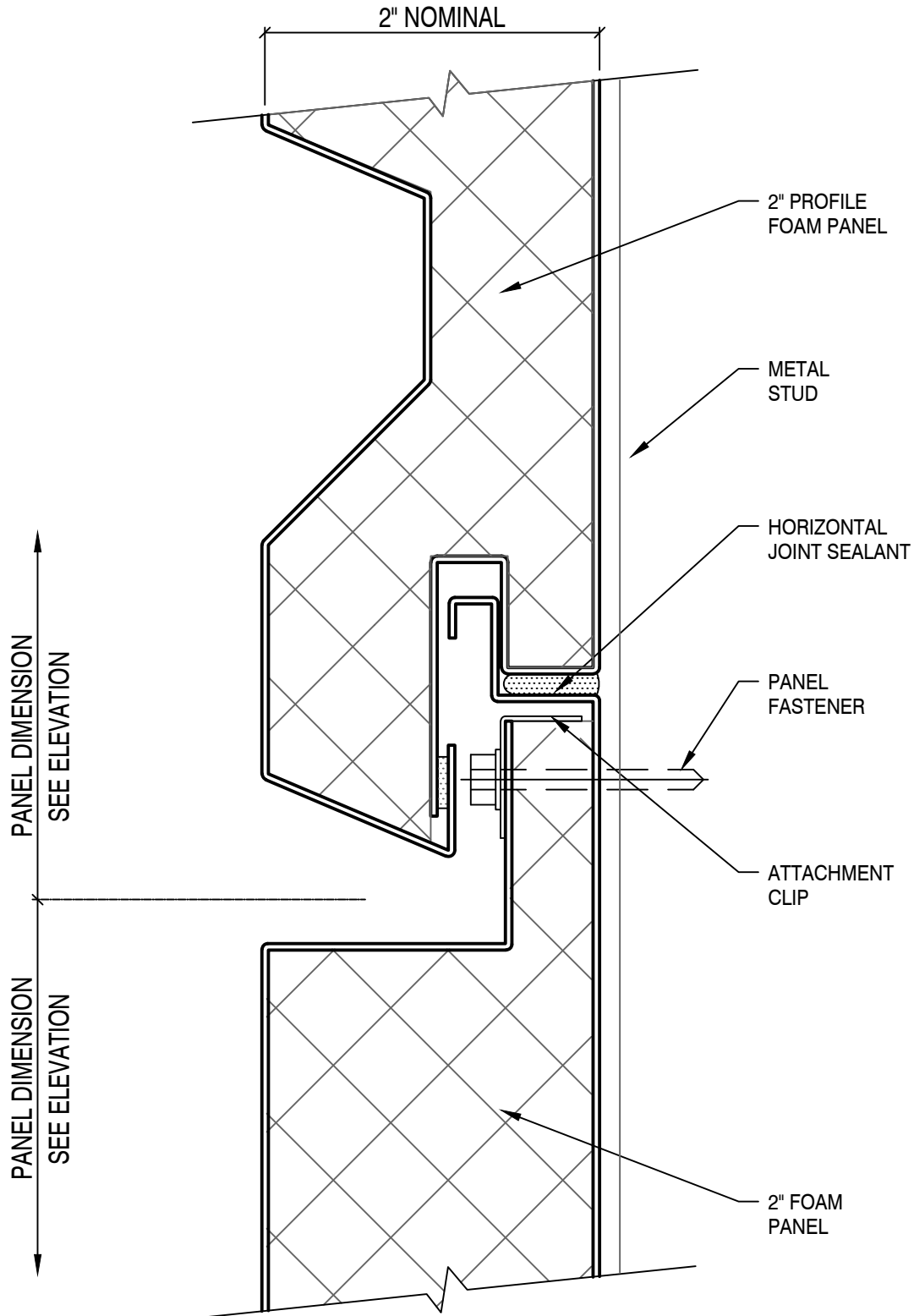












Prötean

Construction Products, Inc.

2" Foam Panels FM-200 Standard Details

Typical Horizontal Joint Vertical Wall Panel System

