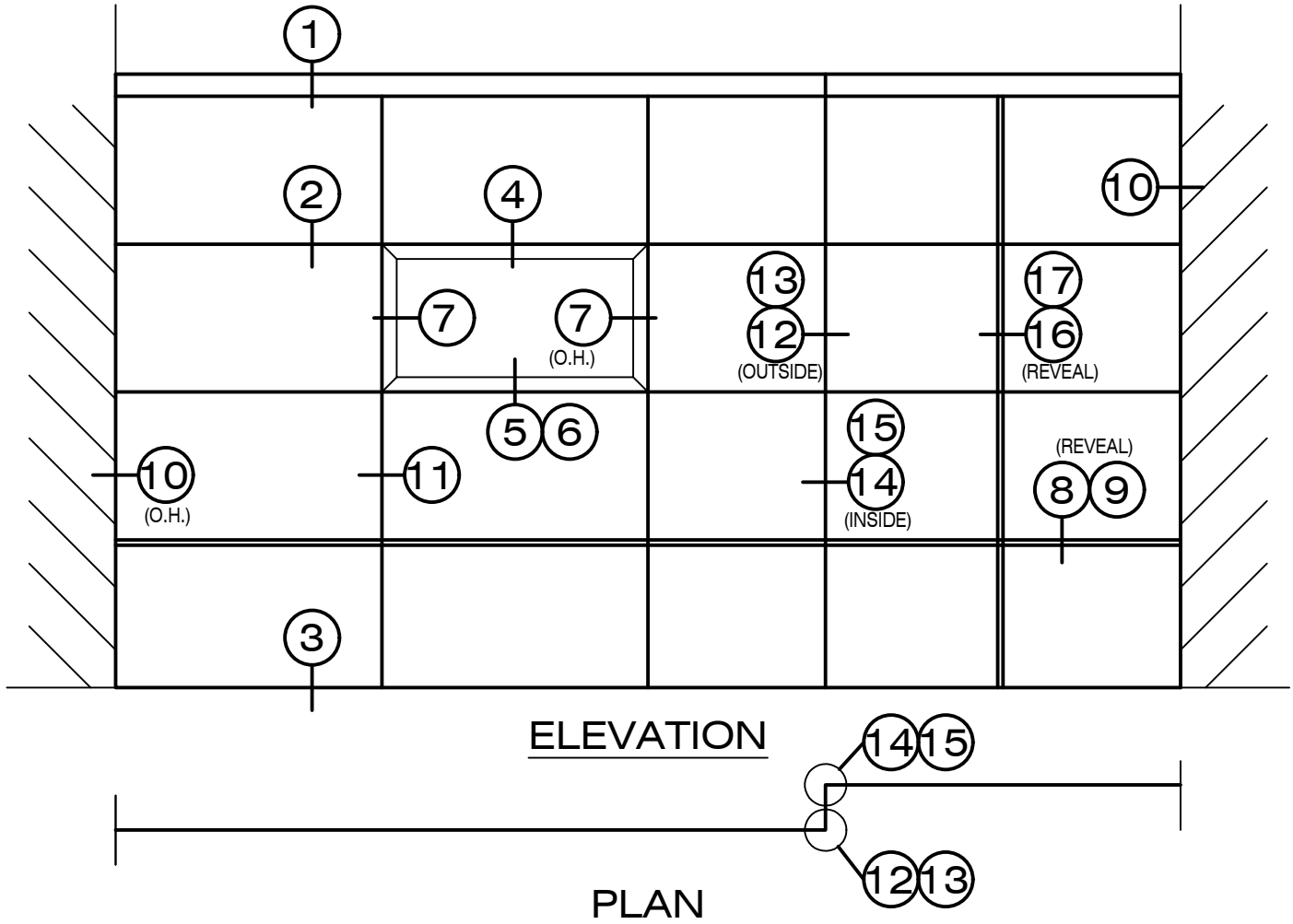


1. Most details included herein are drawn to full scale.
2. Details shown herein, illustrate 1" honeycomb panels. Other thickness and cores are available. Refer to other sections of this literature for additional options or consult Protean for any special requirements.
3. In general, panel attachment should be made along the long edge of the panels.
4. Details as shown herein illustrate a horizontal installation with subgirts and panel attachment located at the horizontal joints. For a vertical panel installation, modify details to install subgirts and panels vertically.
5. Alternate subgirt layouts are available where subgirts can be oriented in the opposite direction of the long edge of the panels. Contact Protean for further information on these types of installations.
6. The enclosed details represent typical standard details for the HC-200 system. In so much as the HC-200 is a custom designed system, this is only the beginning of the possibilities. Consult Protean for assistance in developing custom details for your application.



INDEX

<u>SHEET #</u>	<u>DESCRIPTION</u>	<u>SHEET #</u>	<u>DESCRIPTION</u>
HC-200 / 1	PARAPET CAP	HC-200 / 10	JAMB DETAIL
HC-200 / 2	HORIZONTAL JOINT	HC-200 / 11	VERTICAL JOINT
HC-200 / 3	BASE DETAIL	HC-200 / 12	OUTSIDE CORNER (JT.)
HC-200 / 4	WINDOW HEAD	HC-200 / 13	OUTSIDE CORNER (BENT)
HC-200 / 5	WINDOW SILL	HC-200 / 14	INSIDE CORNER
HC-200 / 6	WINDOW SILL (ALTERNATE)	HC-200 / 15	INSIDE CORNER
HC-200 / 7	WINDOW JAMB	HC-200 / 16	VERT. JT. / HORIZ. REVEAL
HC-200 / 8	HORIZONTAL REVEAL	HC-200 / 17	VERTICAL REVEAL
HC-200 / 9	HORIZONTAL REVEAL		

