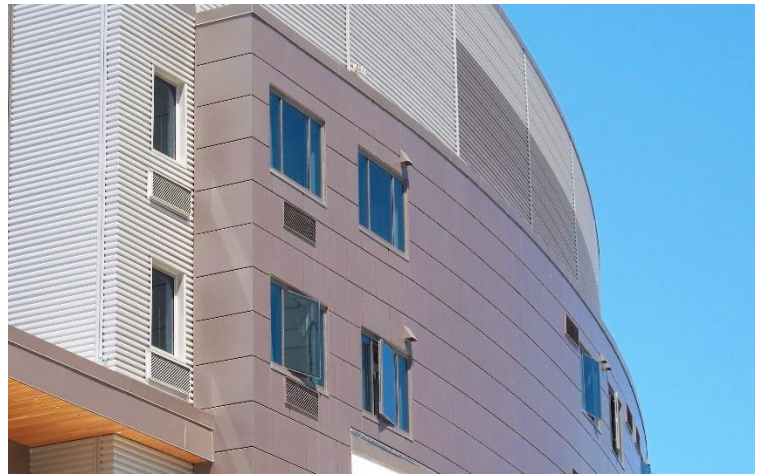




Flexibility for your Legacy



AP-2000RS

Metal Plate Rainscreen Panels

The AP-2000RS Series is formed plate, **back-ventilated rainscreen** panel system, which provides a smooth joint with caulk free edges with tucked and tack welded corners. AP panel systems are best used applications that go down to grade, or as accents with low volume custom colors. The AP-2000RS is our most economical plate system for the service life of your project based upon low initial product cost and minimal service cost.

Materials of Construction

Standard: 0.125" Aluminum (3003/3105 alloy)
Options: 0.080" & 0.090"
5005 alloy (for anodized), 0.080" & 0.125"
16 Ga Stainless Steel
Perforated Metal

Coatings and Colors

Standard: Kynar 500 Finish (unlimited palette)
Options: Mica, Anodized, 2B, #4 or #8 Stainless

Panel Sizes

Maximum Panel Width: 53"
Optimal Widths: 17", 23", 41", 53" (for lowest cost)
Maximum Length: 16' (192")
Optimal Lengths: 48", 96", 144", 192"
System Depth: 1.5"

Markets

Civic Buildings
Educational Complexes
Government Buildings

Warranty: 1 Year Workmanship and 10-year Kynar finish, 5-year anodized

Installation

Utilizing standard installation details, AP-2000RS series panels are sequentially installed to the structure with mechanical fasteners as a rainscreen system. Panel system utilizes a back drainage channel of like material. We recommend use of hat girts and self-tapping screws; however, our panels can be fastened to flat strap furring or direct to 5/8" or heavier plywood. Panel system must be backed by and requires proper Air/Water barrier to be designed and installed as with any rainscreen panel system.

AAMA 508 Certification.

Panels Design Configurations

Rectangular or Square Flat Panels
Geometrically Shaped Panels
Bent Panels – Corner Panels, Copings
Multiple Bends – Fascia Panels
Curved or Radius Panels **Limited**

Joints-Rainscreen Type Principal

½" Dry Joint, Vertical & Horizontal

Panel Weights (Approximate)

1.875 #/SF (0.125")
1.35 #/SF (0.080")
2.65 #/SF (16 Ga SS)

Testing Information Available

Air Infiltration: ASTM E-283
Structural: ASTM E -330
Water Penetration: ASTM E-331